



## Terms and Conditions of Use of Digitised Theses from Trinity College Library Dublin

### Copyright statement

All material supplied by Trinity College Library is protected by copyright (under the Copyright and Related Rights Act, 2000 as amended) and other relevant Intellectual Property Rights. By accessing and using a Digitised Thesis from Trinity College Library you acknowledge that all Intellectual Property Rights in any Works supplied are the sole and exclusive property of the copyright and/or other IPR holder. Specific copyright holders may not be explicitly identified. Use of materials from other sources within a thesis should not be construed as a claim over them.

A non-exclusive, non-transferable licence is hereby granted to those using or reproducing, in whole or in part, the material for valid purposes, providing the copyright owners are acknowledged using the normal conventions. Where specific permission to use material is required, this is identified and such permission must be sought from the copyright holder or agency cited.

### Liability statement

By using a Digitised Thesis, I accept that Trinity College Dublin bears no legal responsibility for the accuracy, legality or comprehensiveness of materials contained within the thesis, and that Trinity College Dublin accepts no liability for indirect, consequential, or incidental, damages or losses arising from use of the thesis for whatever reason. Information located in a thesis may be subject to specific use constraints, details of which may not be explicitly described. It is the responsibility of potential and actual users to be aware of such constraints and to abide by them. By making use of material from a digitised thesis, you accept these copyright and disclaimer provisions. Where it is brought to the attention of Trinity College Library that there may be a breach of copyright or other restraint, it is the policy to withdraw or take down access to a thesis while the issue is being resolved.

### Access Agreement

By using a Digitised Thesis from Trinity College Library you are bound by the following Terms & Conditions. Please read them carefully.

I have read and I understand the following statement: All material supplied via a Digitised Thesis from Trinity College Library is protected by copyright and other intellectual property rights, and duplication or sale of all or part of any of a thesis is not permitted, except that material may be duplicated by you for your research use or for educational purposes in electronic or print form providing the copyright owners are acknowledged using the normal conventions. You must obtain permission for any other use. Electronic or print copies may not be offered, whether for sale or otherwise to anyone. This copy has been supplied on the understanding that it is copyright material and that no quotation from the thesis may be published without proper acknowledgement.



Early Medieval Artistic Styles  
in the Romanesque:  
'Archaic' Architectural  
Sculpture in 11th-13th Century  
Tuscany

Volume 2



**Trinity College Library  
Dublin**



University of Dublin

**THIS THESIS MAY BE READ ONLY IN THE  
LIBRARY**

*Bound By:*  
THE  
THESIS CENTRE  
65 Camden St. Lwr.  
Dublin 2. Ph: 475 3616  
[www.thesiscentre.com](http://www.thesiscentre.com)





EARLY MEDIEVAL ARTISTIC STYLES IN  
THE ROMANESQUE:  
'ARCHAIC' ARCHITECTURAL  
SCULPTURE IN 11<sup>TH</sup>-13<sup>TH</sup> CENTURY  
TUSCANY

By  
EOGHAN DALTON

(in two volumes)

Volume 2

ILLUSTRATIONS

Thesis submission  
to the  
University of Dublin  
Trinity College  
for the  
Degree of Master of Letters

Dr. Rachel Moss, Supervisor  
Department of History of Art & Architecture  
School of Histories and Humanities  
Trinity College, Dublin  
September 2006

TRINITY COLLEGE  
22 NOV 2007  
LIBRARY DUBLIN

THESIS  
8276.2



Except where otherwise indicated, all photographic images shown are the work of the candidate.



Figs. 1-2; Ss. Cornelio e Cipriano di Codiponte.



Fig. 3; S. Paolo a Vendaso, capital.





Figs. 4-5; S. Paolo a Vendasio, capitals.



Fig. 6; Ss. Cornelio e Cipriano di Codiponte, capital.





Figs. 7-8; S. Paolo a Vendaso, capitals.



Fig. 9; Lucca, Cathedral of S. Martino, relief in façade, late 12<sup>th</sup> century.





Fig. 10; S. Cassiano di Controne, façade.



Fig. 11; S. Agata di Mugello, main portal, lintel.

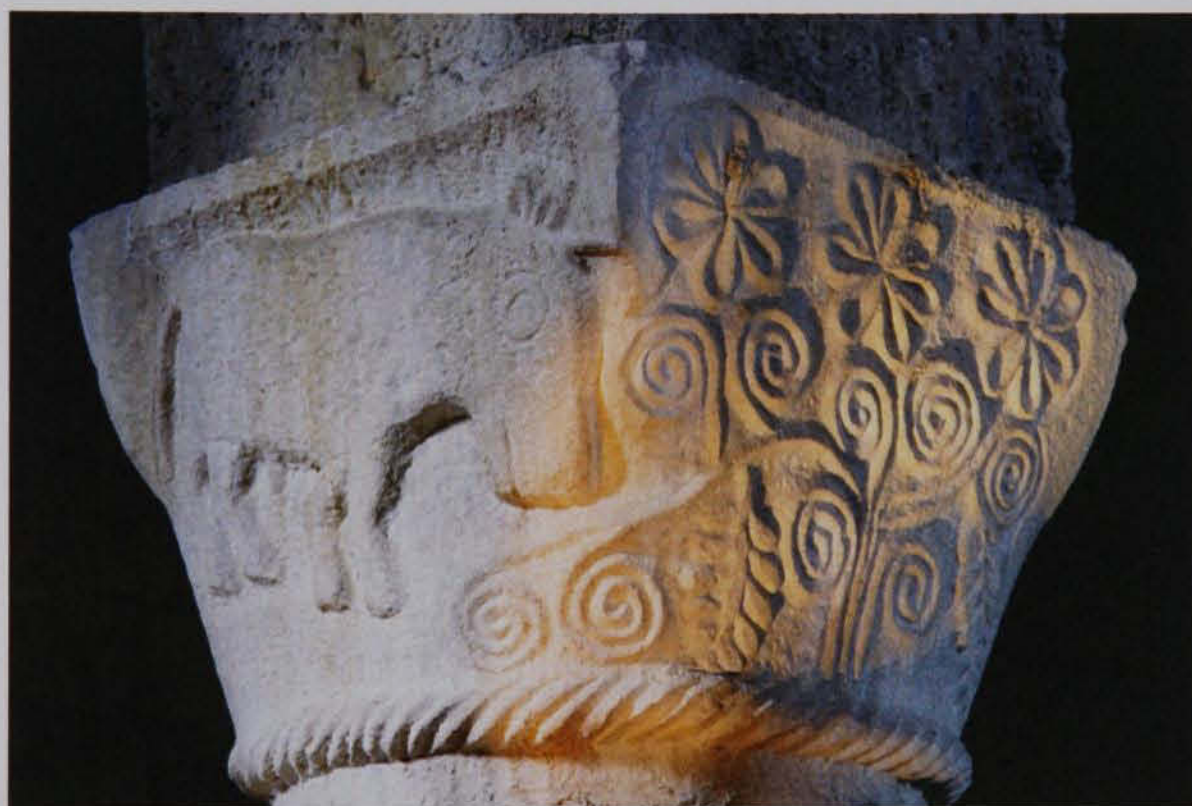


Fig. 12; S. Pietro a Careggine, limestone slab.





Figs. 13-4; S. Maria della Pieve ad Arezzo & S. Pietro in Romena, capitals.



Figs. 15-6; S. Agostino di Vaglisotto, capitals.





Fig. 17; S. Pietro a Gropina, pulpit.





Figs. 18-9; Volterra, S. Giusto, arcading & cornices & Cathedral, cornice on south flank.



Fig. 20; Ss. Quirico e Giulitta, western portal.





Figs. 21-2; S. Caprasio ad Aulla, capital & Como, portal from S. Margherita.



Fig. 23; Duomo di Carrara, cornice.





Fig. 24; S. Maria Assunta a Stazzema, façade, capital.



Fig.25; S. Maria Assunta a Cellole, nave, capital.



Fig. 26; Milan, S. Ambrogio, façade, capital.





Fig. 27; Como, S. Abbondio, apsidal window surround.



Fig. 28; Pavia, S. Michele, southern portal in façade.



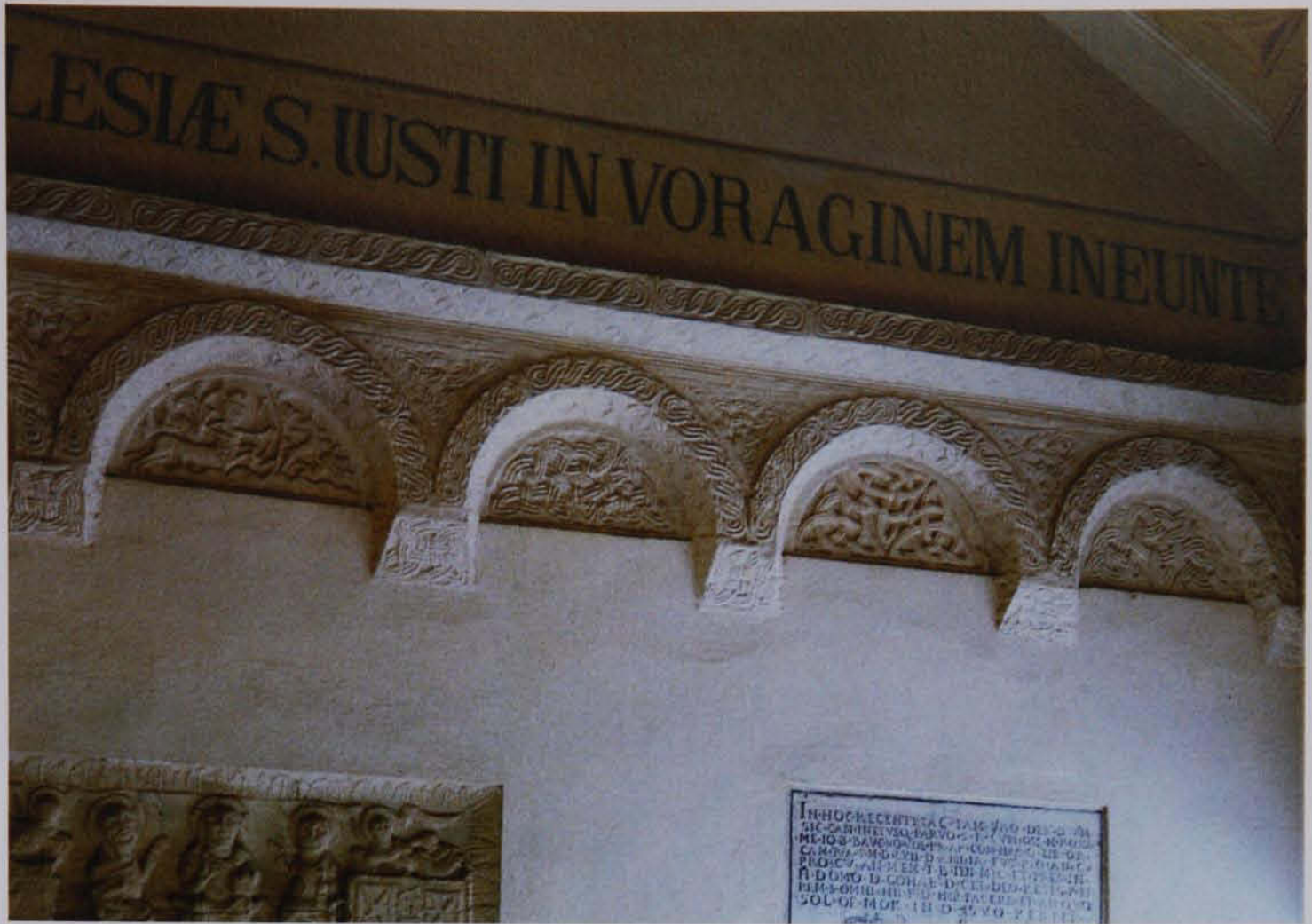


Fig. 29; Modena Cathedral, crypt, capital.



Figs. 30-1; San Gimignano, Spedale di S. Giovanni, façade & S. Maria Assunta a Cellole, apse exterior.





Figs. 32-3; Volterra, S. Giusto, arcading & cornices & S. Maria Assunta a Cellole, apse interior.





Fig. 34; S. Pietro a Cedda, east wall, cornice.



Fig. 35; Duomo di Carrara, cornice.



Fig. 36; Ss. Quirico e Giulitta, western portal (detail).



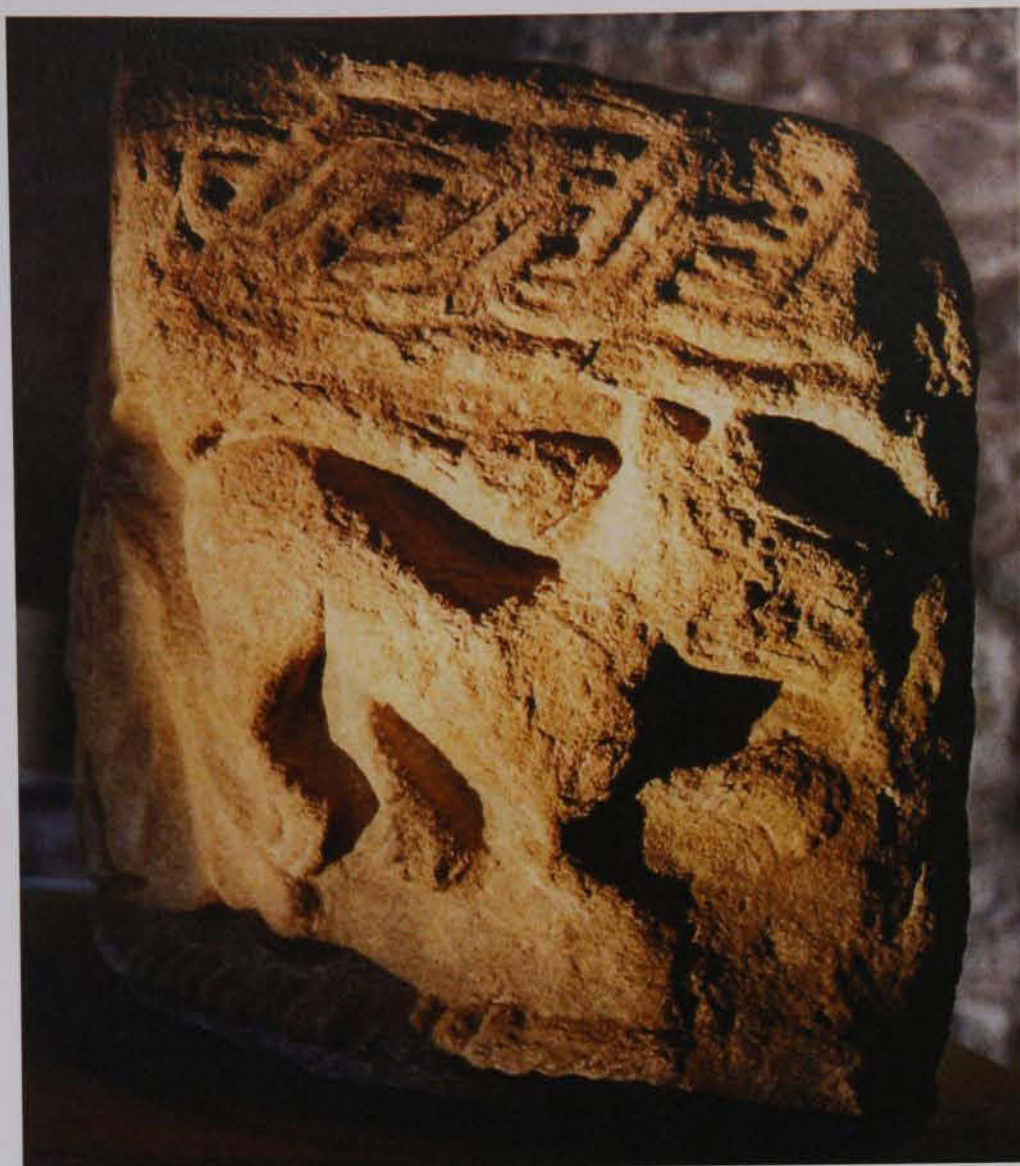


Fig. 37; Aulla, Abbazia di S. Caprasio, capital.

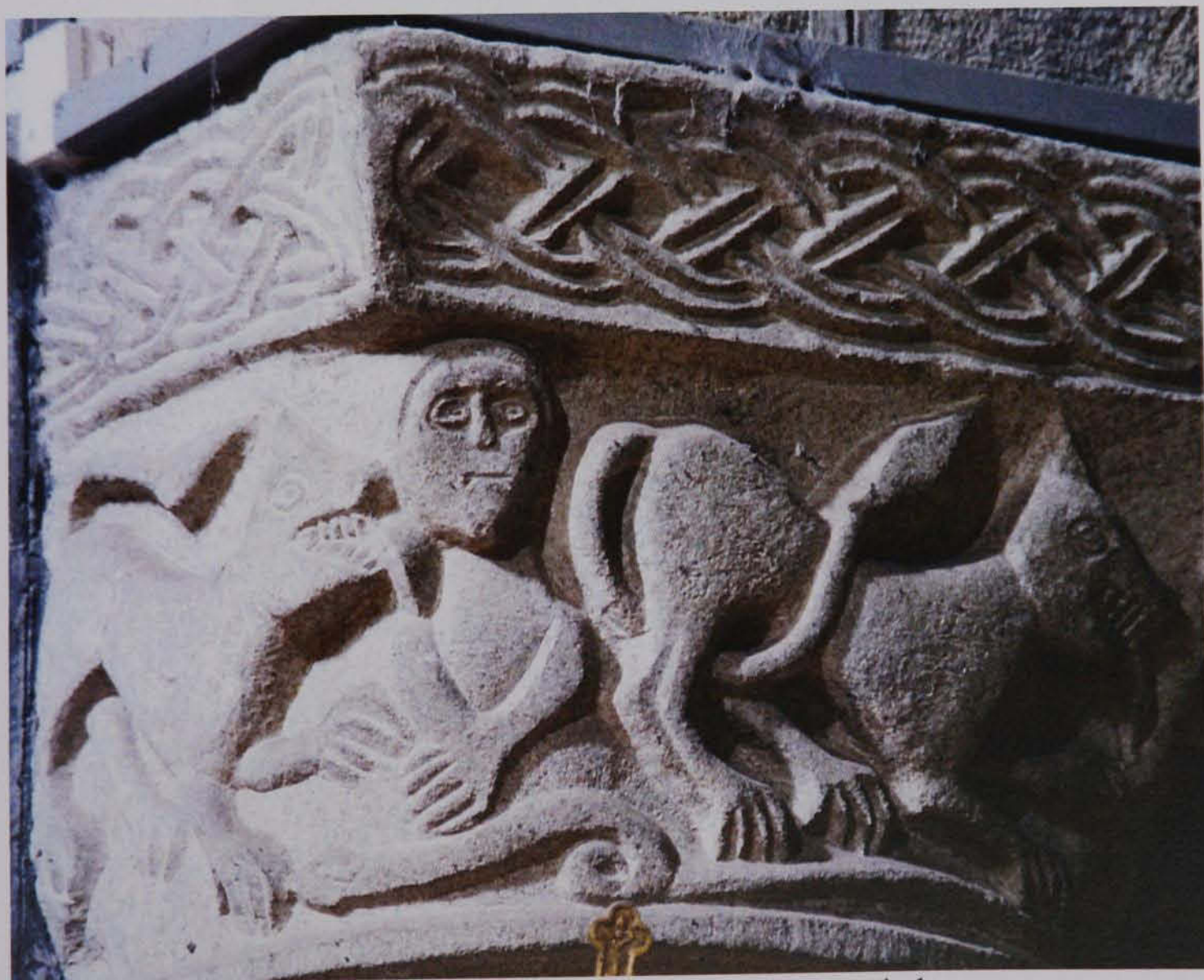


Fig. 38; S. Maria Assunta di Pognana, capital.





Figs. 39-41; S. Gennaro di Asilatta, capitals.





Figs. 42-3; S. Gennaro di Asilatta, western portal, corbels.



Figs. 44-6; S. Tommaso di Arriana, capitals (19<sup>th</sup> century copies).





Figs. 47-9; Gello di Camaione, marble capital.





Fig. 50; S. Gennaro di Asilatta, north flank.

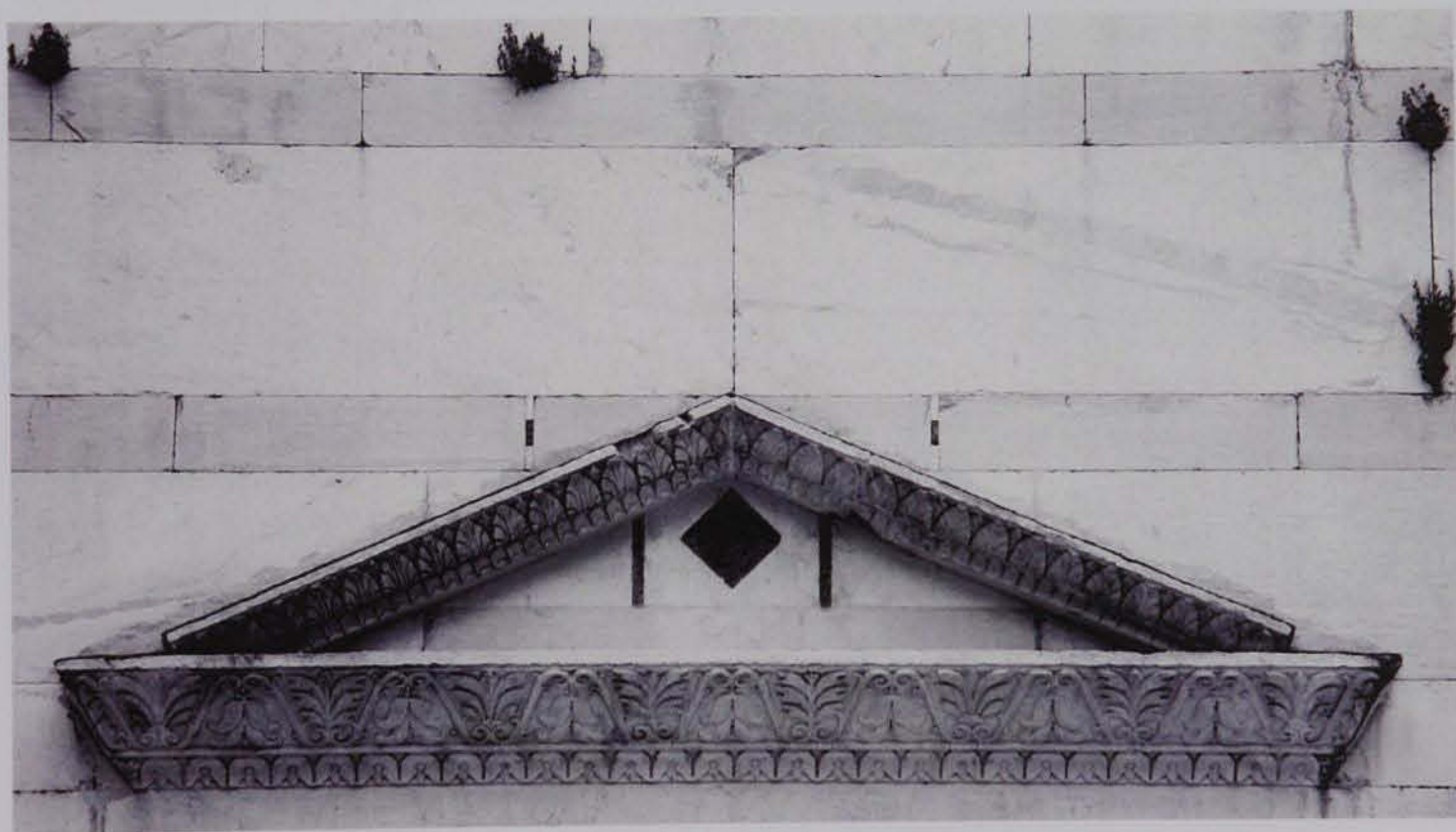


Fig. 51; S. Tommaso di Arriana, north flank, lintel.



Fig. 52; S. Gennaro di Asilatta, capital.





Figs. 53-5; Lucca, S. Alessandro, façade & apse.





Figs. 56-8; S. Cassiano di Controne, capital (top) & façade.





Figs. 59-60; Abbazia di Frassinoro & Abbazia di Nonantola (crypt), capitals.



Fig. 61; S. Cassiano di Controne, western portal, corbel.



Fig. 62; Abbazia di Frassinoro, capital.





Fig. 63; S. Maria a Rubbiano.



Fig. 64; Duomo di Modena, crypt, capital.



Figs. 65-6; S. Apollonio in Canossa & S. Antimo, façade, capitals.





Fig. 67; S. Antimo, eastern interior.



Figs. 68-70; S. Pietro in Romena (top left) & S. Antimo, nave & cloister, capitals.





Figs. 71-2; S. Antimo, nave & S. Maria di Lamulas, chancel arch.



Fig. 73; S. Margherita di Antraccoli, south flank, *spolia* pilaster (detail).

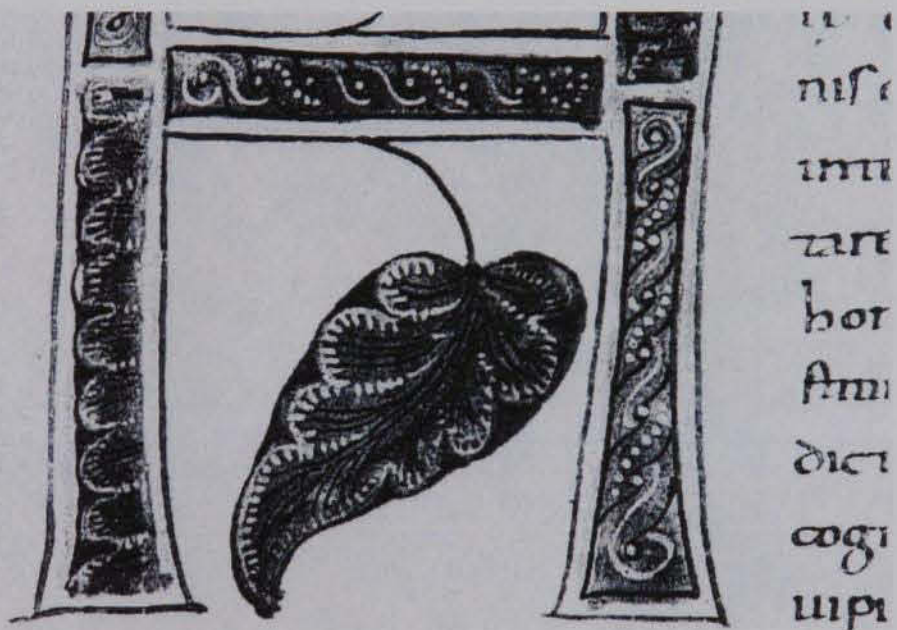


Fig. 74; Lucca, Biblioteca Capitolare, m.s. 124, fol. 86v, detail of initial H (after Dalli Regoli, 1986).



Fig. 75; S. Cassiano di Controne, portal.





Figs. 76-7; S. Pietro a Gropina, pulpit (detail) & capital.





Figs. 78-9; S. Pietro a Gropina, capital & pulpit (details).





Fig. 80; Lucca, Villa Guinigi, 'slab 405' (detail).



Fig. 81; S. Maria a Piazza di Brancoli, façade.





Fig. 82; Bardine, S. Terenzio de' Monti, *spolia* slab set into south flank.



Fig. 83; Duomo di Pisa, *spolia* slab.



Fig. 84; S. Cassiano di Controne, façade, *bacino* (modern replacement).





Fig. 85; Langobardic *croce aurea* from Calvisano, 6<sup>th</sup>-7<sup>th</sup> century (after Menis, 1992).

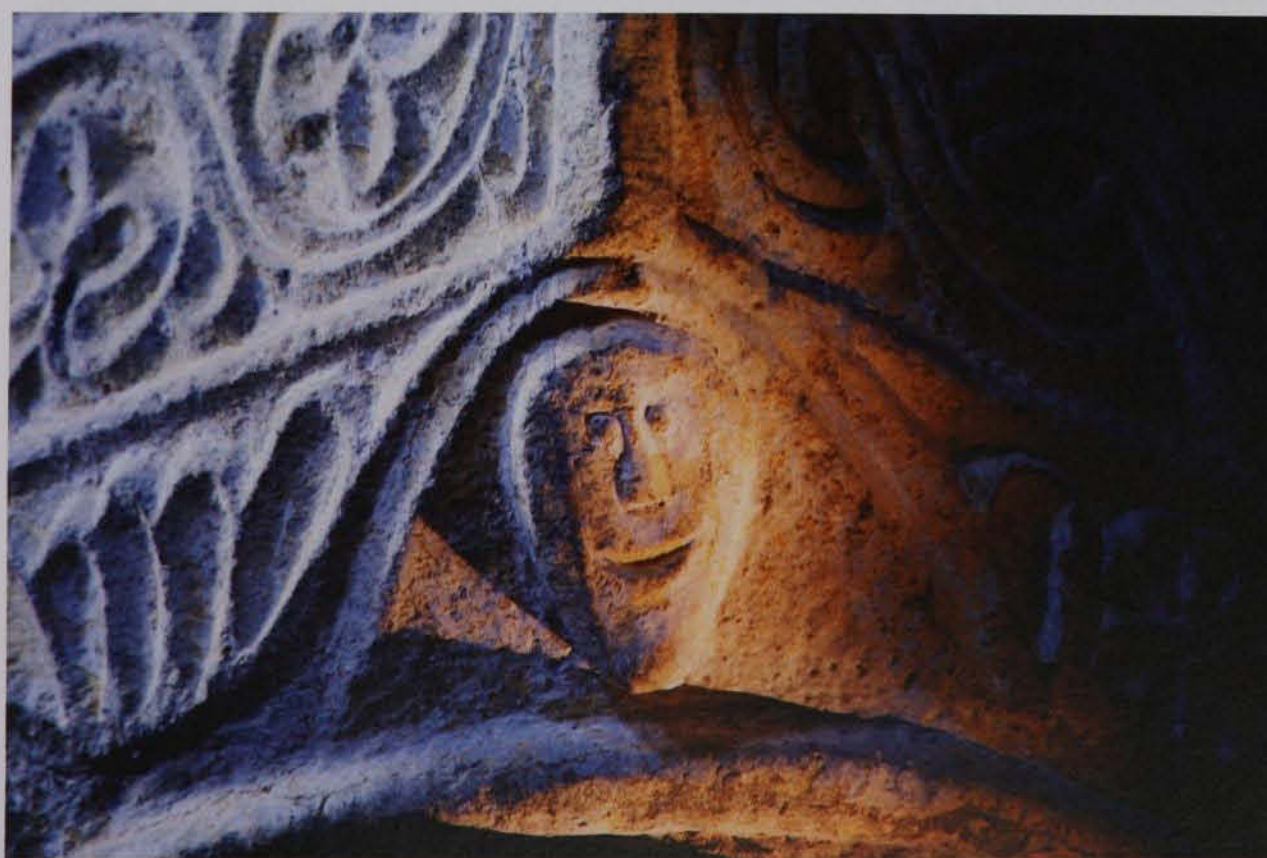


Fig. 86; S. Paolo a Vendasio, capital (detail).





Figs. 87-8; Altar of Ratchis, Cividale, lateral panels, 8<sup>th</sup> century (after Peroni, 1984).





Fig. 89; Badia di S. Maria Assunta di Farneta, capital from crypt (detail).



Fig. 90; S. Maria Assunta di Pognana, engaged capital (detail).



Fig. 91; S. Paolo a Vendaso, capital (detail).





Figs. 92-3; S. Cassiano di Controne, capital & "erratic" reliefs in nave.



Figs. 94-5; Badia di S. Baronto, crypt & Badia di S. Maria di Prataglia, crypt.





Fig. 96; S. Maria alla Chiassa, sandstone slab.



Figs. 97-8; S. Maria alla Chiassa, sandstone slab (detail) & Merovingian belt buckle, 7<sup>th</sup> century, Burgundy (after Hubert, Porcher & Volbach, 1969).





Fig. 99; S. Pietro a Gropina, pulpit.



Figs. 100-2; Ss. Vito e Modesto a Corsignano, western portal, corbels  
& S. Pietro di Offiano, capital.





Fig. 103; S. Cassiano di Controne, northern clerestory.



Figs. 104-5; S. Cassiano di Controne, façade portal.





Fig. 106; S. Pietro a Gropina, pulpit.



Fig. 107; Ss. Vito e Modesto a Corsignano, façade portal.



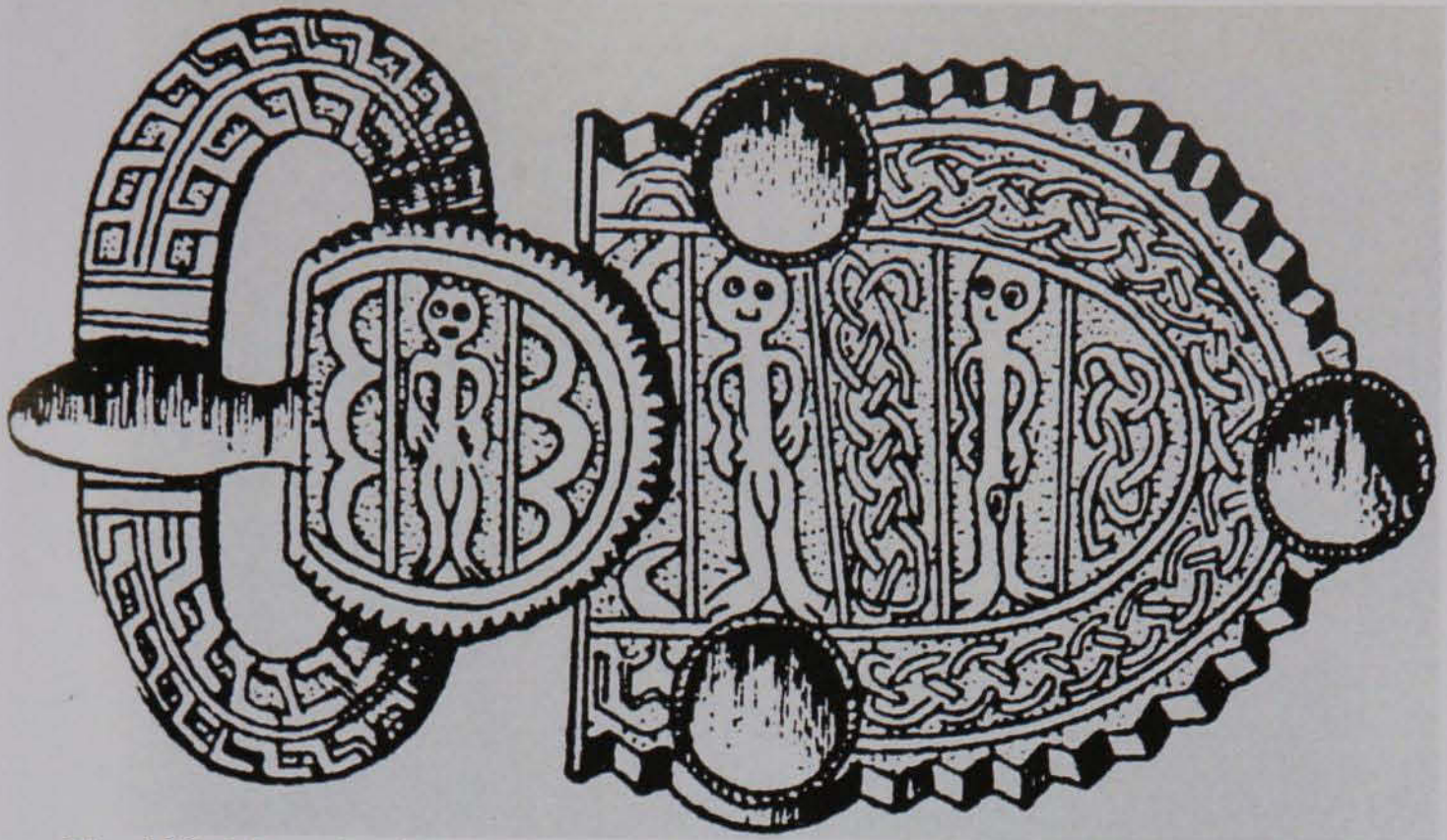
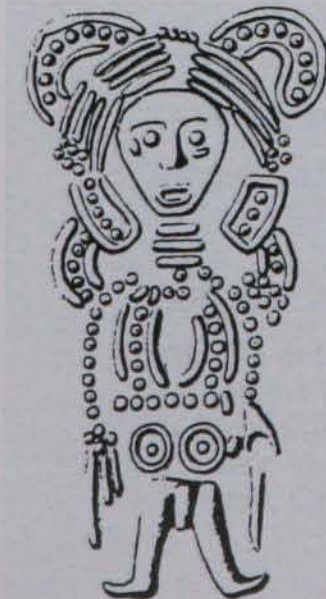


Fig. 108; Merovingian buckle-plate from Picardy (after Weir & Jerman, 1986).



Figs. 109-11; S. Pietro a Gropina & Ss. Cornelio e Cipriano di Codiponte, capitals (details), & detail of Langobardic cross from Dueville (after Roth, 1980).





Figs. 112-3; S. Martino a Vado, capital & pulvin (details).



Fig. 114; Volterra, Palazzo Guarnacci, Etruscan sarcophagus.





Figs. 115-6; Duomo di Sovana, main portal, jamb decoration & lunette.





Fig. 117; Ss. Cornelio e Cipriano di Codiponte, capital.



Fig. 118; Luni, fragmentary marble column.





Fig. 119 Ss. Cornelio e Cipriano di Codiponte, capital.



Fig. 120; Luni, fragmentary marble column.





Figs. 121-2; S. Martino a Vado & S. Maria Assunta a Stia, capitals.



Figs. 123-4; S. Giorgio Martire a Petrella Tifernina, lunette of northern portal & sarcophagus of Theodote, Pavia, 8<sup>th</sup> century (after Peroni, 1984).



Fig. 125; S. Maria a Piazza di Brancoli, façade.





Figs. 126-7; S. Paolo a Vendasio, capital (detail) & detail of Langobardic fibula from Arcisa near Chiusi, 6<sup>th</sup>-7<sup>th</sup> century (after Melucco Vaccaro, 1971).





Figs. 128-9; S. Paolo a Vendasio, capital & Lucca,  
Villa Guinigi, 'slab 405', 8<sup>th</sup> century.





Figs. 130-1; Detail of fibula from necropolis of Nocera Umbra, Umbria, 6<sup>th</sup>-7<sup>th</sup> century (after Menis, 1992) & S. Cassiano di Controne, western portal (detail).

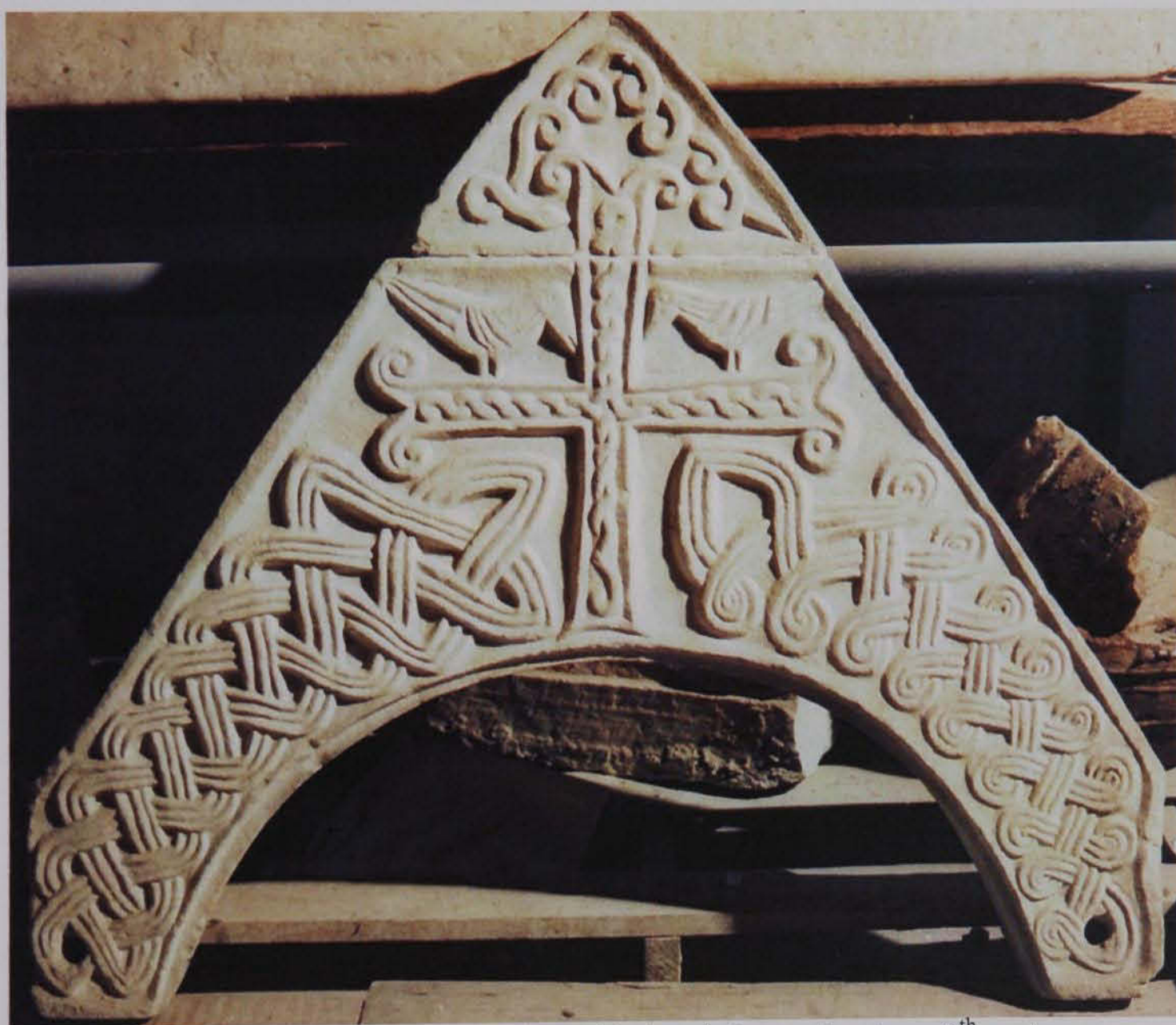


Fig. 132; S. Andrea a Saltocchio, gabled arch from ciborium, 8<sup>th</sup> century.



Fig. 133; S. Marco di Rigoli, baptismal font, 8<sup>th</sup> century (detail).





Fig. 134; Gello di Camaione, capital.



Figs. 135-6; S. Maria di Lamulas, chancel arch & S. Giulia a Caprona, apse, corbel.



Figs. 137-8; S. Giovanni Battista a Ponte allo Spino, façade.





Fig. 139; S. Martino in Campo, *ex situ* door lintel.



Figs. 140-1; Ss. Cornelio e Cipriano di Codiponte, capitals.





Figs. 142-4; Ss. Cornelio e Cipriano di Codiponte, capitals.





Fig. 145; S. Giovanni Battista a Ponte allo Spino, façade.



Figs. 146-8; S. Maria Assunta a Cellole, apse interior & details of capitals.





Figs. 149-51; S. Maria Assunta a Cellole, dated block in façade & details of mini-lunettes in apse exterior & interior.



Fig. 152; S. Maria Assunta a Cellole, apse interior.





Fig. 153; S. Maria Assunta a Cellole, apse exterior.



Fig. 154. S. Cassiano di Controne, façade.



Fig. 155; S. Maria Assunta a Cellole, apse interior.





Figs. 156-8; S. Maria Assunta a Cellole, apse interior.





Fig. 159; Polenta, S. Donato, capital.



Figs. 160-1; S. Maria Assunta a Cellole, apse exterior.





Fig. 162; S. Maria Assunta a Cellole, apse exterior.



Figs. 163-4; S. Maria Assunta a Cellole, main portal, corbel & Anglo-Saxon motif: "exploded scroll" (after Cramp, 1984).



Figs. 165-6; S. Maria Assunta a Cellole, base of bell tower & Anglo-Saxon motif (after Cramp, 1984).





Figs. 167-8; S. Maria Assunta a Cellole, central apsidal window, abacus & Visigothic belt buckle from Substantion, Montpellier (after Puig i Cadafalch, 1944).



Fig. 169; S. Maria Assunta a Cellole, apse exterior.





Figs. 170-1; Luni, marble *capitellino* & Ss. Cornelio e Cipriano di Codiponte, capital.



Figs. 172-3; Luni, marble fragment & S. Paolo a Vendaso, capital (detail).



Fig. 174; Langobardic fibula, 6<sup>th</sup> century, gilt silver, from Kranj-Lajh, Slovenia (after Menis, 1992).





Fig. 175; Luni, marble fragment.



Fig. 176; S. Paolo a Vendaso, capital.



Fig. 177; S. Pietro in Villore, crypt, capital.





Figs. 178-80; S. Maria Assunta di Pognana, marble fragment & nave capitals.





Figs. 181-2; S. Maria Assunta di Pognana, marble fragment.





Figs. 183-6; S. Pietro di Offiano, capitals.





Figs. 187-8; S. Pietro di Offiano, pulvin & Ss. Cornelio e Cipriano di Codiponte, capital.



Figs. 189-90; S. Pietro di Offiano, sandstone fragment & Ss. Cornelio e Cipriano di Codiponte, capital.





Figs. 191-3; Ss. Vito e Modesto a Corsignano, early medieval fragments & southern portal, left jamb.





Figs. 194-5; Ss. Vito e Modesto a Corsignano, early medieval fragment & façade.

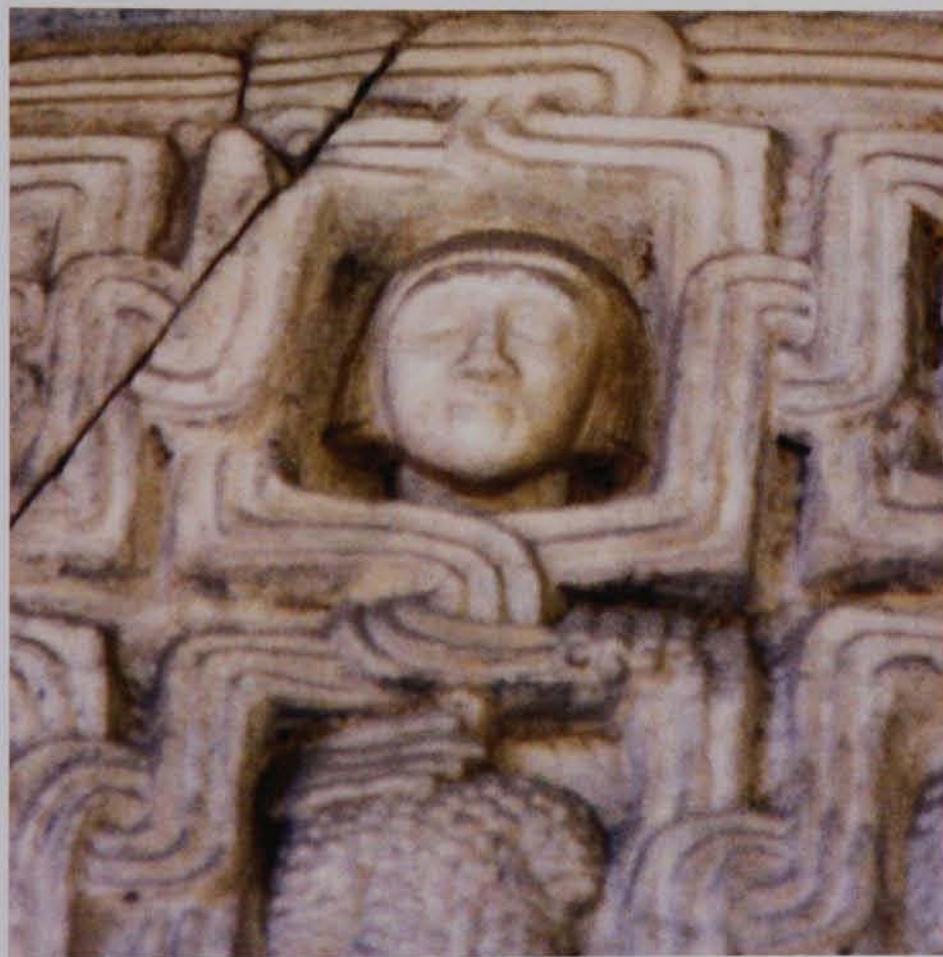


Figs. 196-7; Ss. Vito e Modesto a Corsignano, façade.



Fig. 198; Ss. Vito e Modesto a Corsignano, pre-Romanesque capital.





Figs. 199-202; Arezzo, S. Maria della Pieve, lunette above south portal & corbel in façade.





Figs. 203-5; Massa Martana, Ss. Fidenzio e Terenzio, eastern interior.





Figs. 206-8; Massa Martana, Ss. Fidenzio e Terenzio, eastern interior.



Fig. 209; Massa Martana, Ss. Fidenzio e Terenzio, western slab of ambo.



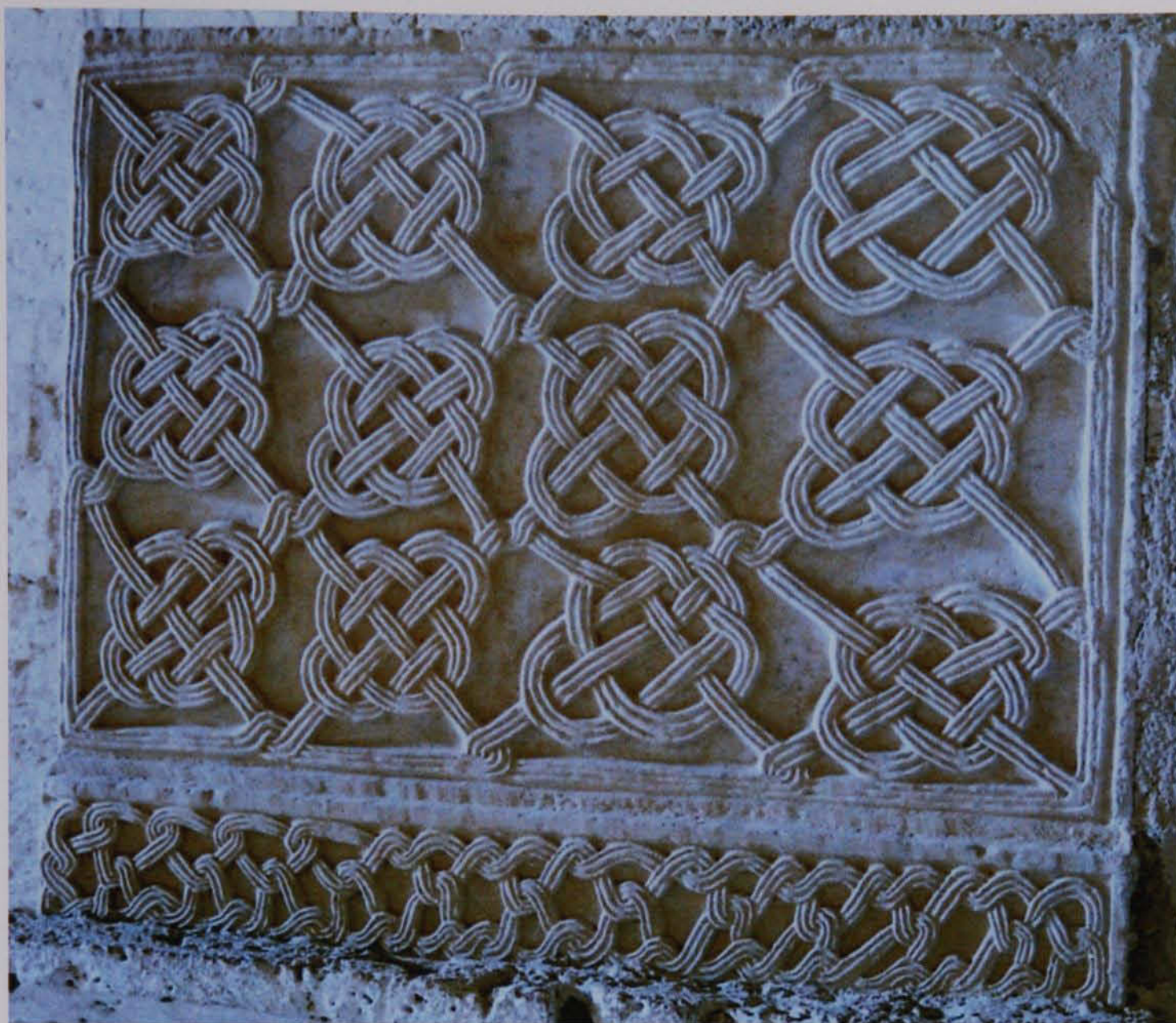


Fig. 210; Massa Martana, Ss. Fidenzio e Terenzio, southern slab of ambo.



Figs. 211-3; Massa Martana, Ss. Fidenzio e Terenzio, eastern interior.





Figs. 214-6; Massa Martana, Ss. Fidenzio e Terenzio, eastern interior (top) & exterior.



Figs. 217-9; Massa Martana, Ss. Fidenzio e Terenzio, eastern interior.



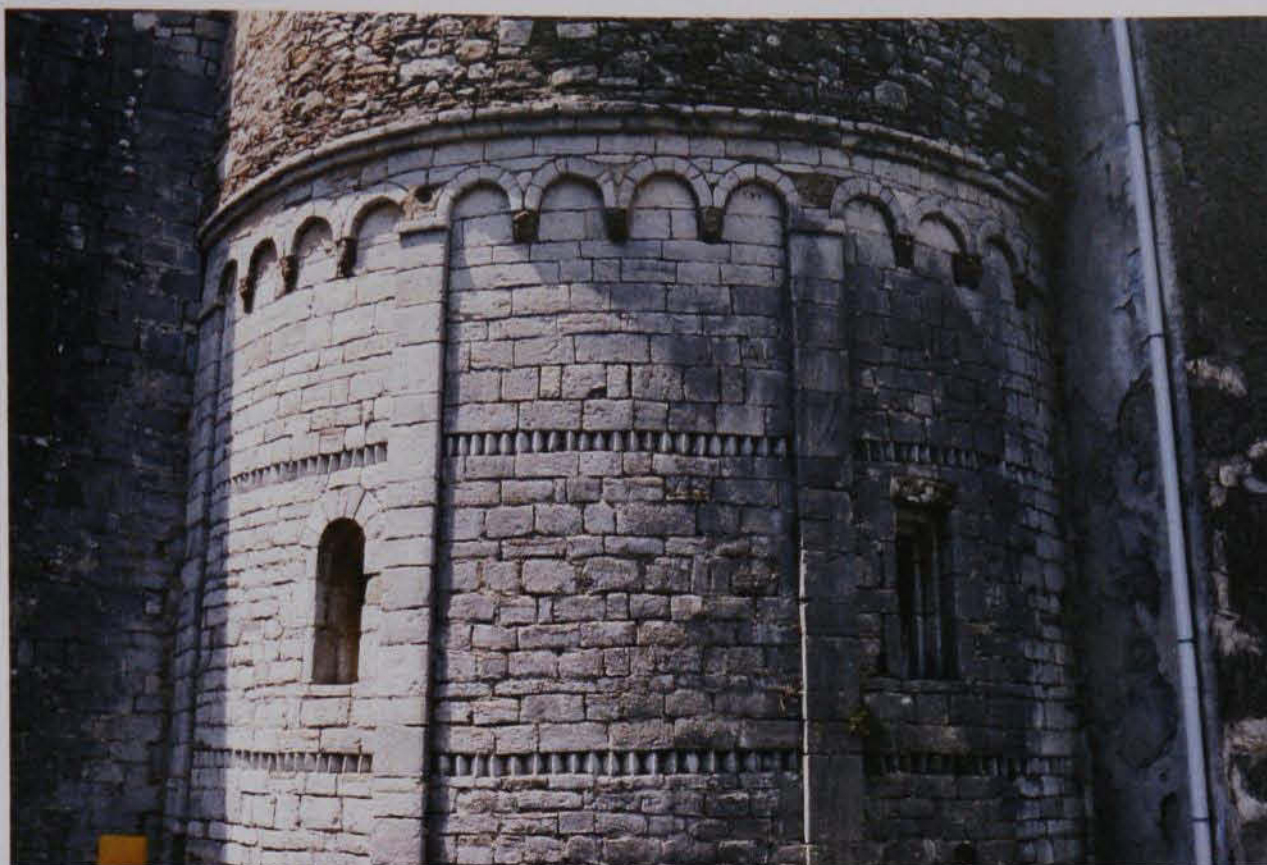


Fig. 220; S. Martino di Coreglia Antelminelli, apse.



Fig. 221; S. Giusto di Marlia, north flank.



Figs. 222-3; S. Martino ad Arliano, eastern & northern exterior, corbels.





Figs. 224-6; S. Martino di Coreglia Antelminelli, northwestern capital.



Figs. 227-8; S. Martino di Coreglia Antelminelli, southern capitals.





Fig. 229; S. Martino di Coreglia Antelminelli, southern capital.



Figs. 230-1; S. Martino di Coreglia Antelminelli, north flank, lintel & S. Giovanni Battista di Controne, north flank, corbel.



Figs. 232-3; S. Paolo di Vico Pancellorum, capitals.





Figs. 234-6; S. Paolo di Vico Pancellorum, capitals.

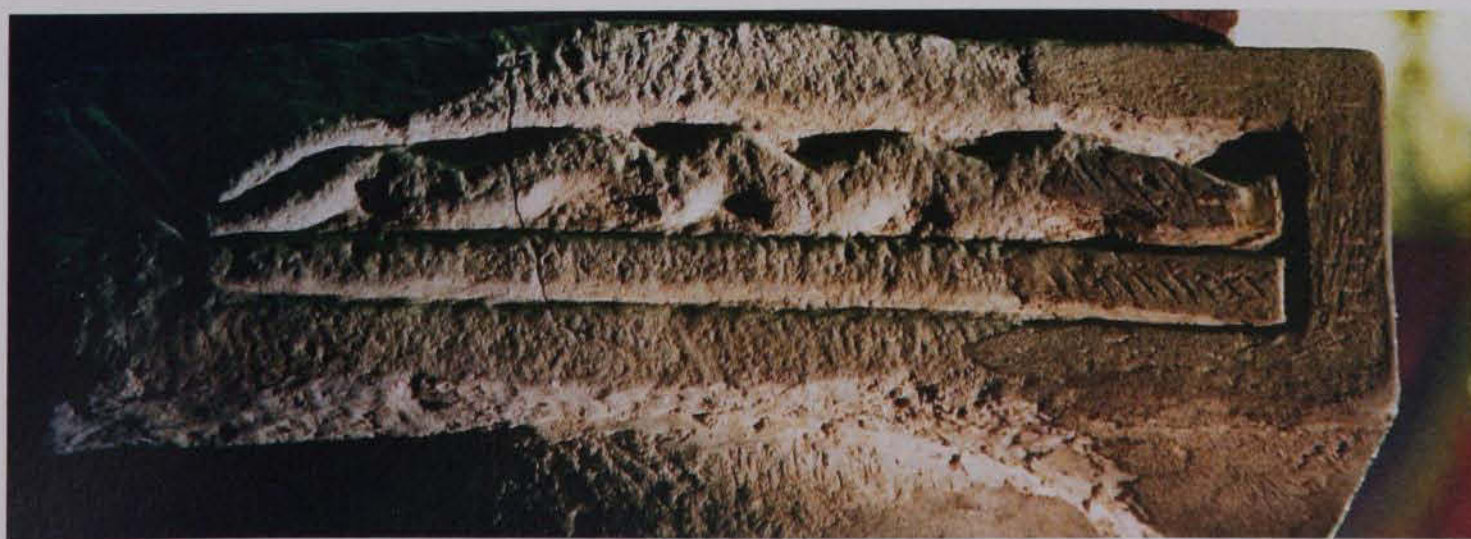


Fig. 237; S. Pietro di Corsena, capital.





Figs. 238-40; Lucca: Villa Guinigi, S. Micheletto & Badia di Cantignano, 8<sup>th</sup> century marble slab & pilasters.





Figs. 241-2; Pavia, S. Eusebio, crypt, capitals.



Fig. 243; Polenta, S. Donato, capital.



Fig. 244; S. Pietro in Romena, capital (detail).





Figs. 245-6; Badia di S. Maria a Conèo, north wall of interior, engaged capital & S. Giovanni Battista a Corsano, façade



Fig. 247; Langobardic pottery, 6<sup>th</sup>-7<sup>th</sup> century (after Menis, 1992).





Figs. 248-9; S. Maria in Salteano, block with carved relief.





Fig. 250; Langobardic bronze fibula, 6<sup>th</sup>-7<sup>th</sup> century, from necropolis of Tiarno di Sotto, Trento (after Menis, 1992).



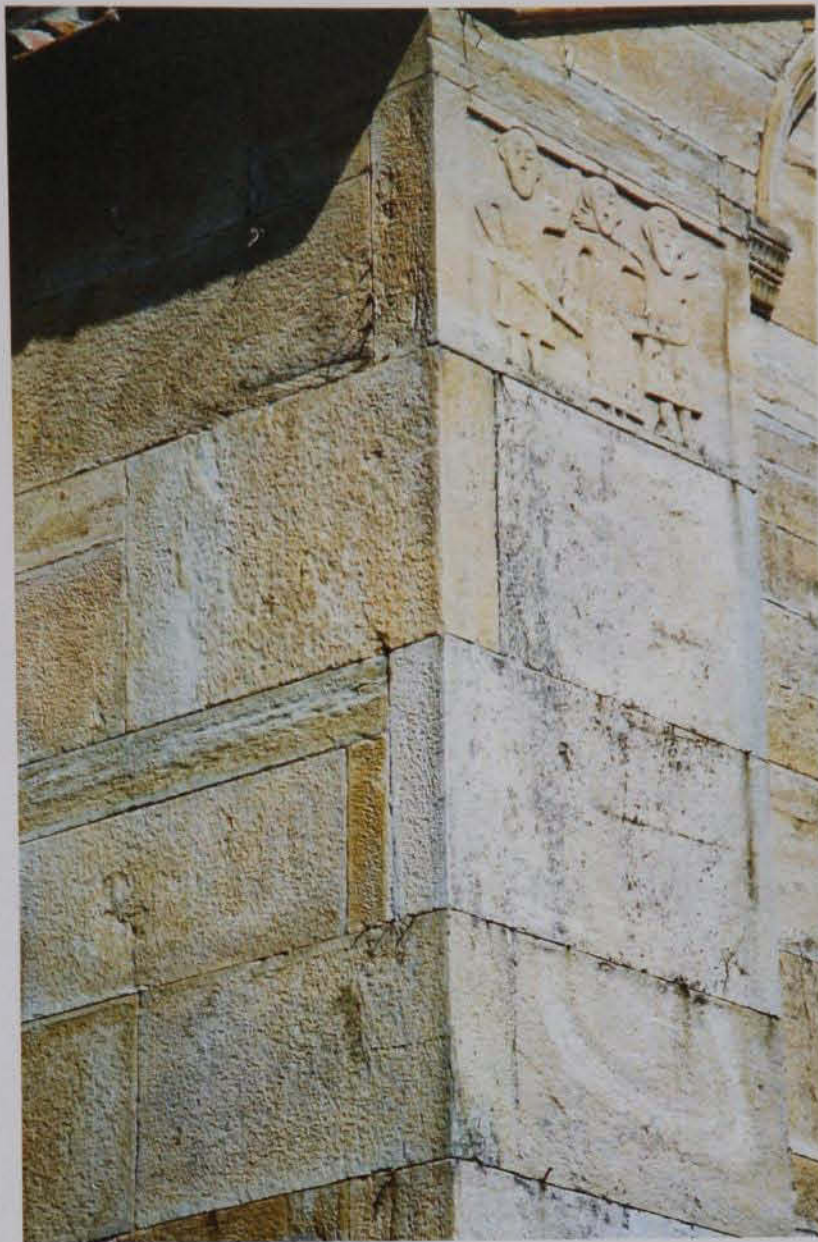
Fig. 251; S. Maria Assunta di Villabasilica, crypt, capital.





Figs. 252-3; Ss. Maria e Giovanni Battista a Vicopisano, façade.





Figs. 254-6; Ss. Maria e Giovanni Battista a Vicopisano, Ss. Giovanni ed Ermolao a Calci & Pisa Cathedral, southeastern returns.





Figs. 257-8; Lucca, S. Maria foris Portam, northwest return & west side of northern transept.



Fig. 259; Lucca, S. Michele in Foro, east wall.





Fig. 260; Lucca, S. Michele in Foro, east wall.



Fig. 261; Ss. Giovanni ed Ermolao a Calci, east wall, arcuated lintel.





Figs. 262-4; Ss. Giovanni ed Ermolao a Calci, east wall & apse, arcuated lintels.





Figs. 265-7; Ss. Maria e Giovanni Battista a Vicopisano, arcuated lintel (top) & altar.



Fig. 268; Ss. Giovanni ed Ermolao a Calci, baptismal font by Biduinus.





Fig. 269; Pisa Cathedral, façade, *tarsia* panel (after Baracchini, 1992).



Fig. 270; Pisa Cathedral, Cordoban style capital.



Fig. 271; Pisa, S. Frediano, western portal, *spolia* lintel.

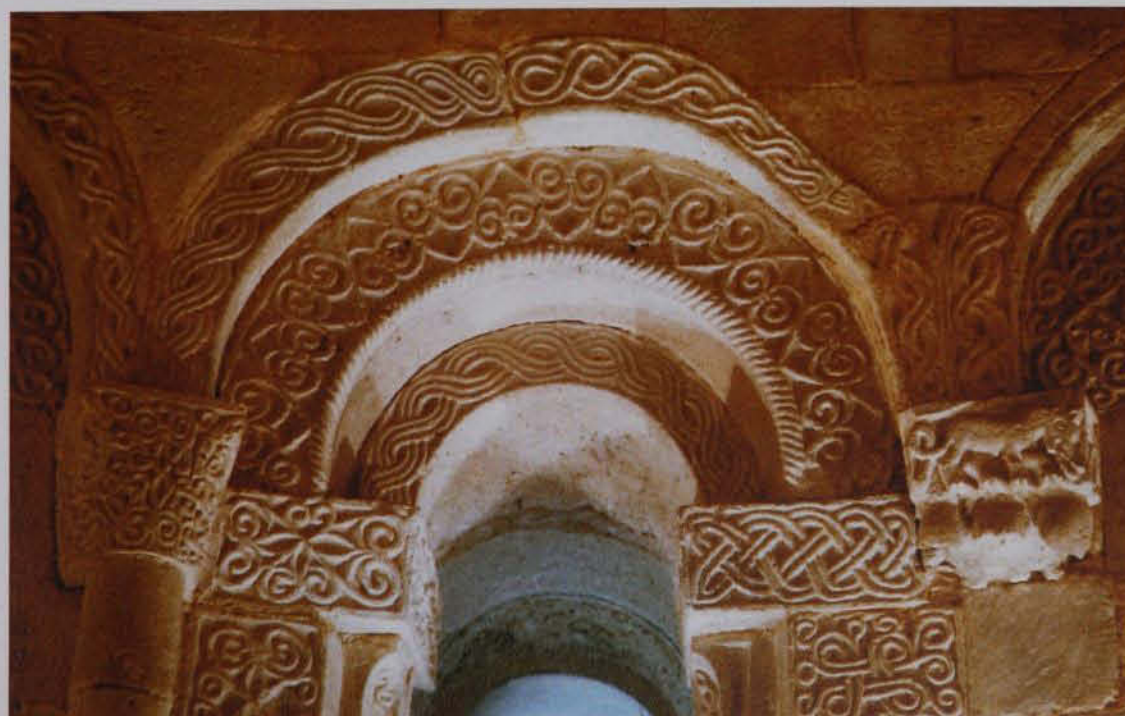


Fig. 272; S. Maria Assunta a Cellole, apse interior.





Fig. 273; Badia di S. Maria a Conèo, north wall of exterior, cornice.



Fig. 274; Rome, S. Clemente, cathedra.





Figs. 275-6; Pisa (environs), S. Piero a Grado, north doorway.





Figs. 277-9; S. Giorgio Martire a Petrella Tifernina, S. Maria della Strada in Agro di Matrice, and S. Giorgio di Campobasso, portal lunettes (after Peroni, 1984).





Figs. 280-1; Cathedral of Aversa, relief panel (after Hubert, Porcher & Volbach, 1969) & Sovana, Duomo, right jamb of northern portal.





Figs. 282-3; Cathedral of Minturno, panel of pulpit staircase & Cathedral of Gaeta, relief panel (after Glass, 1991).





Fig. 284; Langobardic bronze fibula, 6<sup>th</sup>-7<sup>th</sup> century, from necropolis of Villa Lagarina, Trento (after Menis, 1992).



Fig. 285; Langobardic bone comb, 6<sup>th</sup> century, Museo archeologico, Milan.

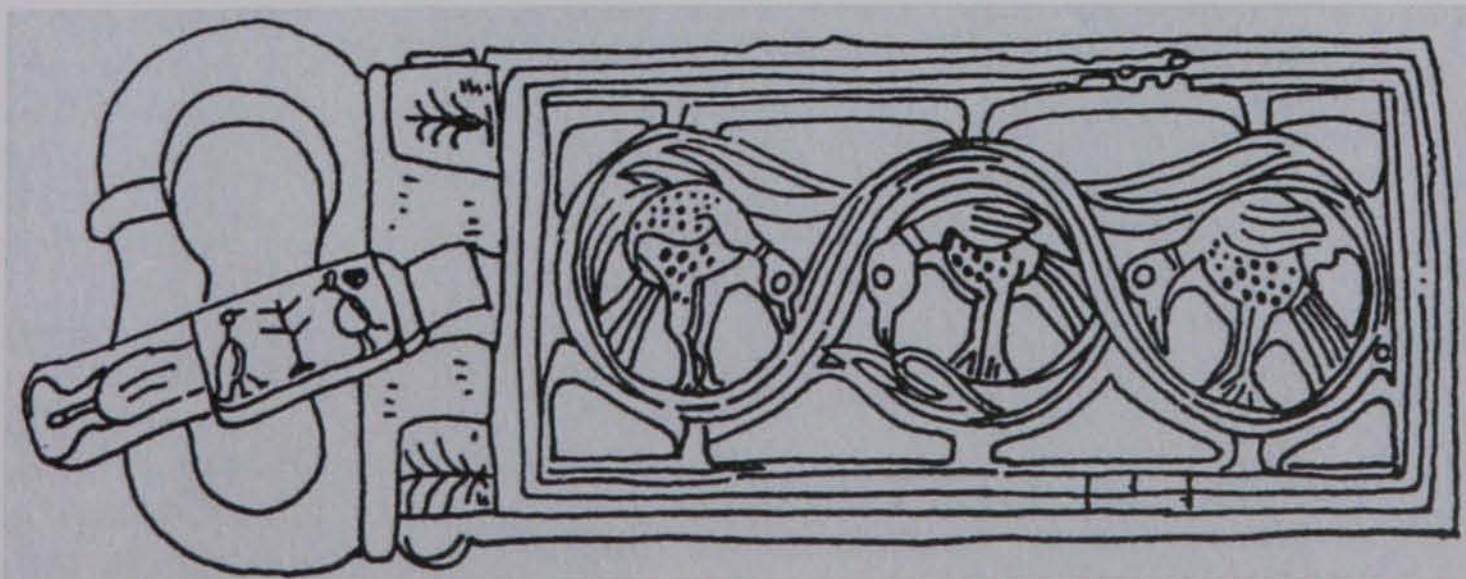


Fig. 286; S. Angelo in Formis, Capua, capital reused as font.



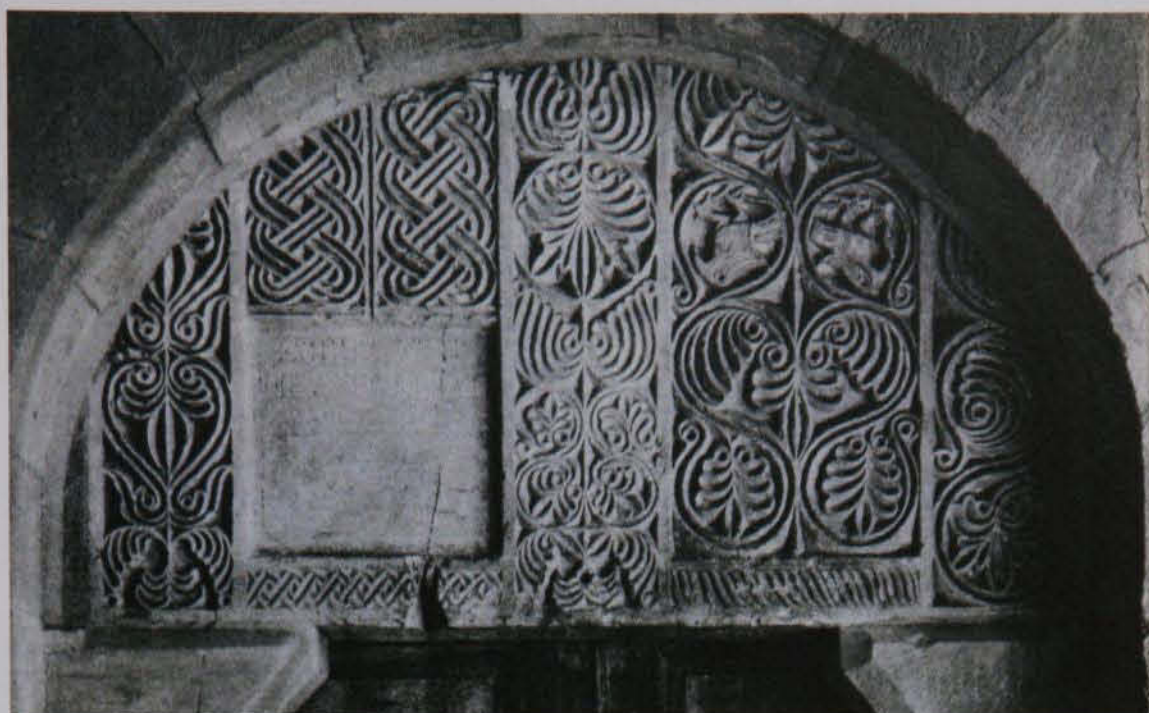


Fig. 287; Lucca (environs), S. Pietro a Vico Asulari, fragment of ciborium.



Figs. 288-90; S. Miguel de Escalada, choir frieze (after Fontaine, 1977). S. Pedro de la Nave, abacus (after de Palol Salellas, 1991). Visigothic belt buckle from necropolis of La Guardia, Jaén (after Palol de Salellas, 1955).





Figs. 291-3; S. Miguel de Escalada, tympanum, S. María de Lebeña, corbels & S. Millán de la Cogolla, capitals (after Fontaine, 1977).





Figs. 294-5; S. María de Naranco, roundel (after Fontaine, 1973) & Visigothic belt buckle from the province of León (after de Palol Salellas, 1991).



Fig. 296; Reliquary of Saint Aemilian, ivory panel showing Leovigild in battle with the *Suevi*, third quarter 11<sup>th</sup> century (after Williams, 1993).



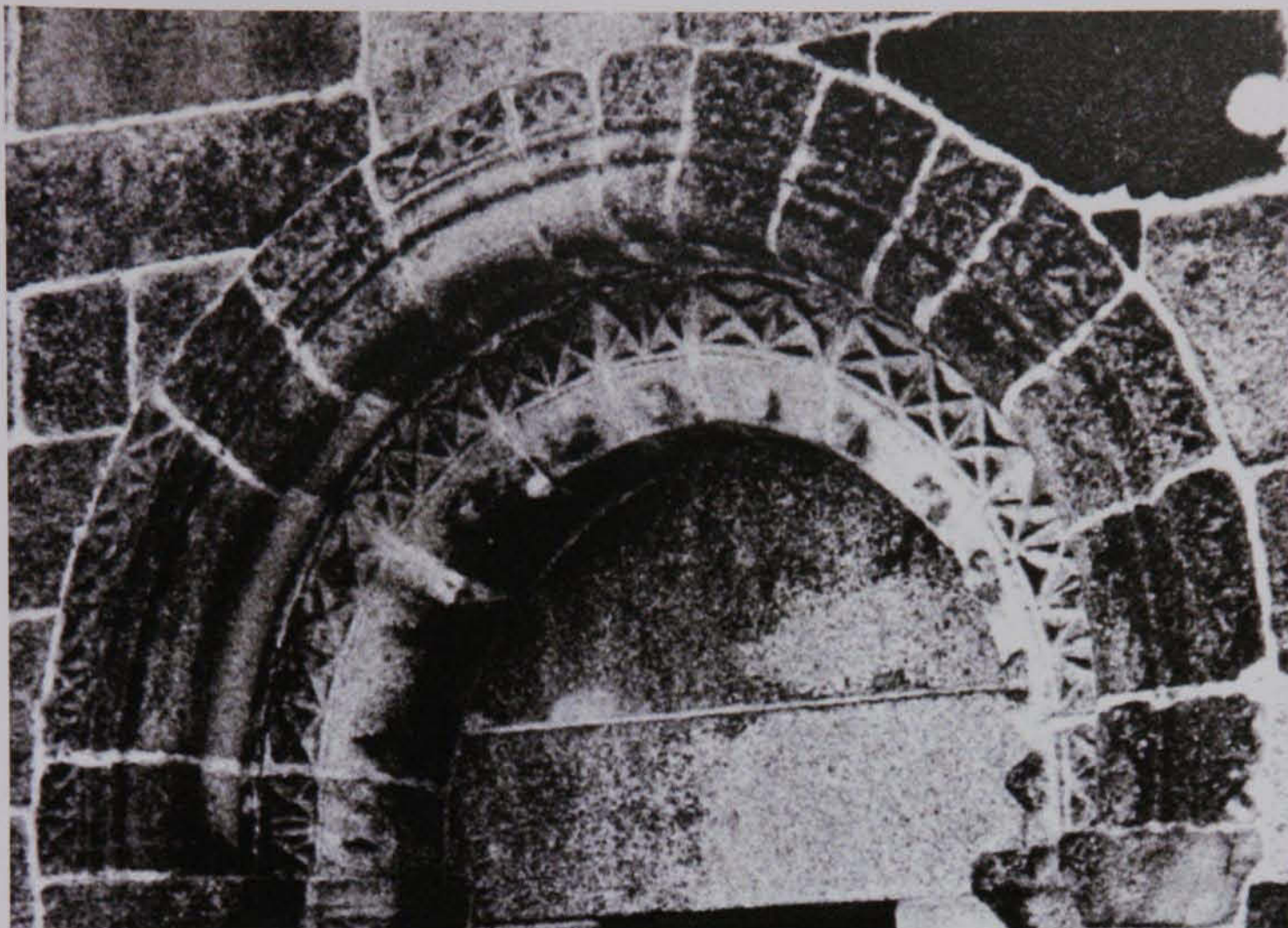


Fig. 297; S. Pedro de Rates, north portal (after Graf, 1987).



Fig. 298; S. Pedro de la Nave, apse, arcuated lintel (after de Palol Salellas, 1991).





Figs. 299-300; S. Pedro de Rates, southern door, underside of the lintel (after Graf, 1987) & Visigothic chancel screen posts from S. Pedro de Coimbra (after Graf, 1986).





Fig. 301; S. Pedro de Águilas, lunette of west portal (after Graf, 1986).



Fig. 302; Visigothic relief carving, Córdoba (after Fontaine, 1973).



Fig. 303; The Cross of the Angels, Asturian, early 9<sup>th</sup> century (after Williams, 1993).





Figs. 304-5; Rio Mau, northern portal arch & S. Martinho de Manhente, western portal arch (after Graf, 1987).

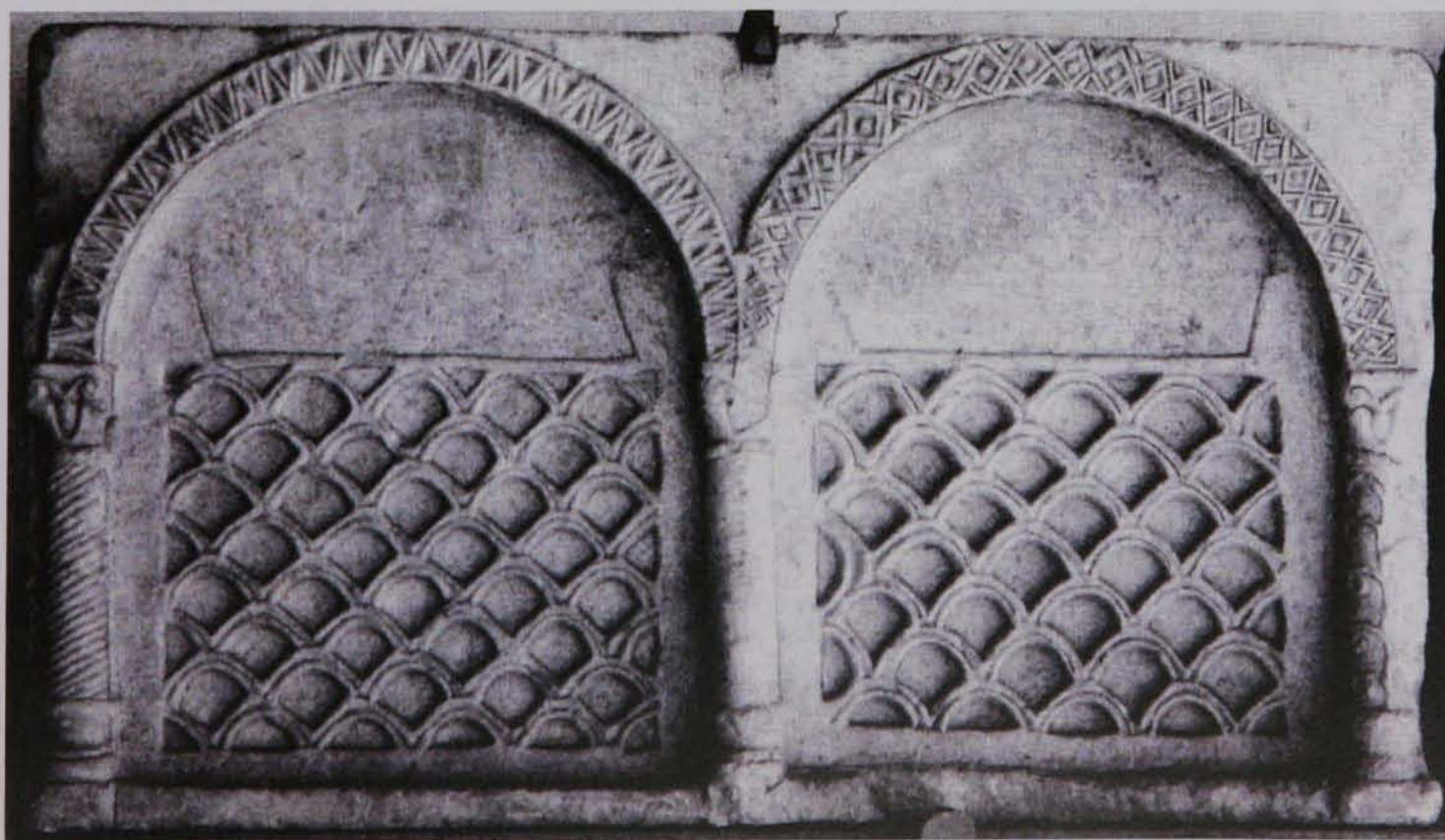


Fig. 306; Visigothic chancel screen from Mérida (after de Palol Salellas, 1991).





Fig. 307; St.-Georges de Boscherville, choir, capital with possible image of Thor (after Baylé, 1985).



Figs. 308-9; Voussoir from Evrecy, Calvados (after Baylé, 1990) & Ornament from the boss of a penannular brooch from Skail, Orkney (after Wilson and Klindt-Jensen, 1966).



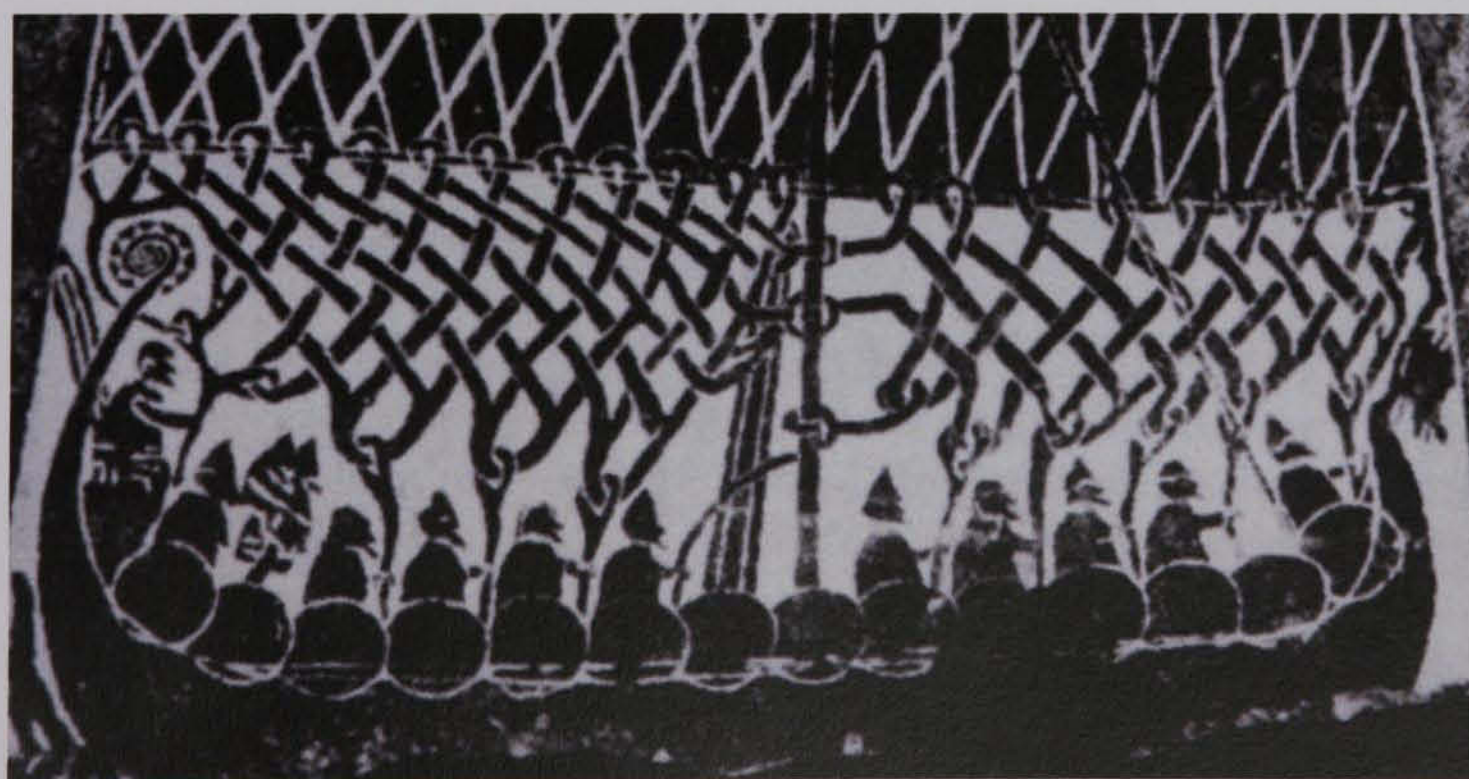


Figs. 310-2; Ste.-Marie-du-Mont, capital (after Baylé, 2003), Relief from Ste.-Paix de Caen (after Musset, 1967) & Heggen weather vane from Modum, Norway (after Wilson and Klindt-Jensen, 1966).





Fig. 313; Sarcophagus, St. Paul's churchyard, London  
(after Wilson and Klindt-Jensen, 1966).



Figs. 314-5; Montebourg, font & Viking slab from Tingstäde, Gotland  
(after Baylé, 1982).





Fig. 316; Martinvast, capital (after Baylé, 1999).

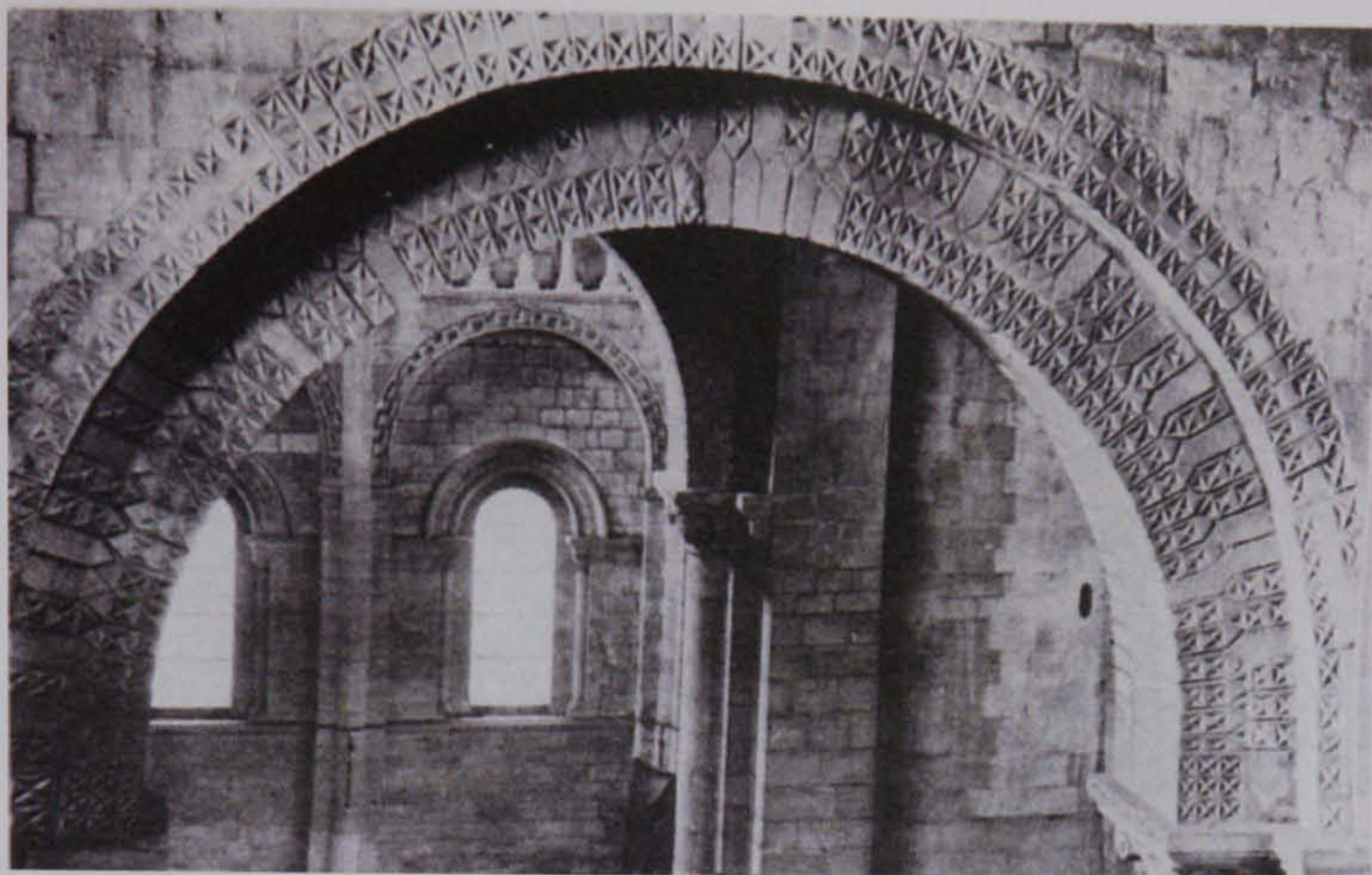


Fig. 317; Autheuil, capital in choir (after Baylé, 1990).



Fig. 318; Tilly-sur-Seulles, capital (after Baylé, 2003).





Figs. 319-20; La Trinité de Caen, northern transept arch & nave capital  
(after Baylé, 1996).

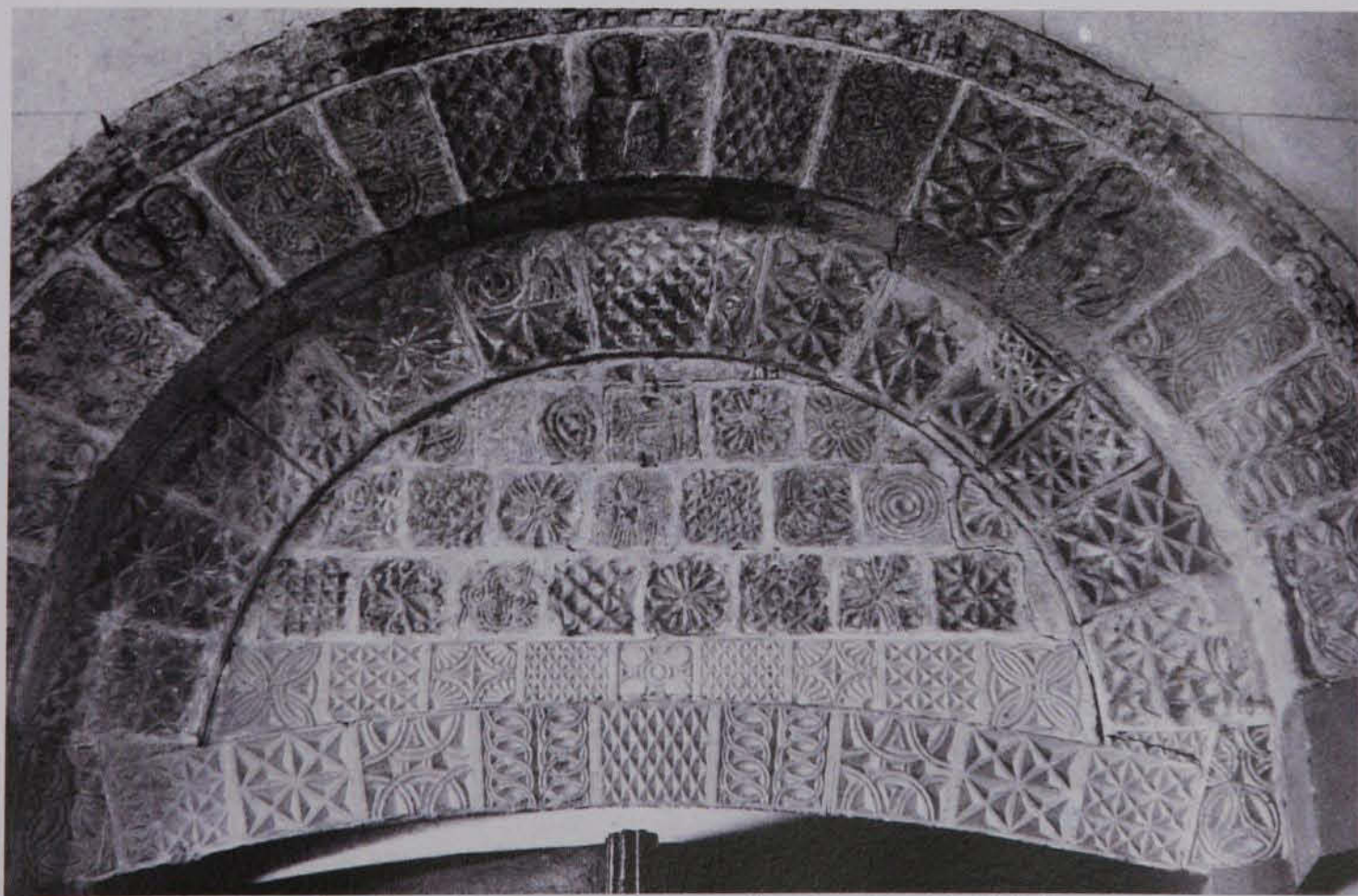


Fig. 321; Montgaroult, portal (after Baylé, 1996).





Fig. 322; Bully (Calvados), tympanum of west portal (after Musset, 1967).



Figs. 323-4; Church of Vågå, Gudbrandsdal, Norway (after Anker, 1969) & Detail of Carolingian capital with chip-carving, 9<sup>th</sup> century, St. Justinus, Höchst, Frankfurt-Main (after Schutz, 2004).



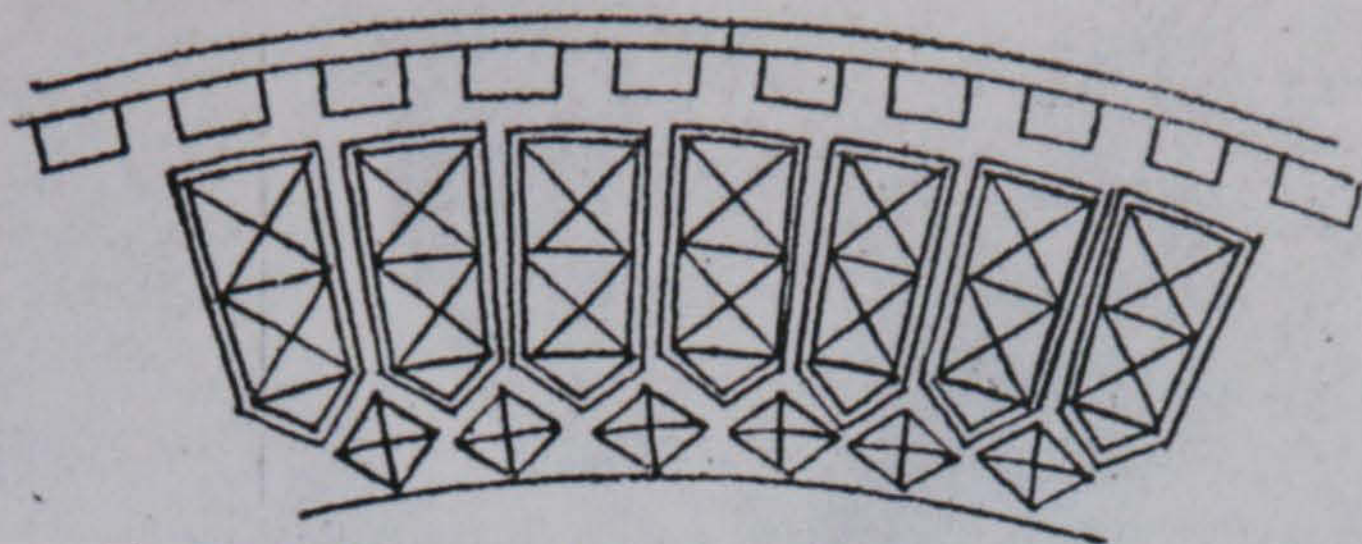


Fig. 325; La Basse-œuvre de Beauvais, portal archivolt, 10<sup>th</sup> century  
(after Micheli, 1939).



Figs. 326-7; Oulchy-le-Château & Morienvall, capitals  
(after Prache, 1983).





Figs. 328-30; Church of Cortrat, tympanum & Tumulus of Gavri'nis, Morbihan  
(after Varagnac, 1956).





Figs. 331-2; 'Slab of Ursus', Abbazia di S. Pietro in Valle, Ferentillo (Umbria), 8<sup>th</sup> century, with detail of 'self portrait' of the sculptor Ursus with chisel in hand (after Peroni, 1984).















