

The Kilkenny Shop
Kilkenny
Ireland





This brochure illustrates some of the many products designed by Kilkenny Design Workshops for Irish manufacturers. Because of the Workshops' wide spread of activities – several of them concerned with non-consumer products – it cannot show a comprehensive selection of KDW's work.



The Kilkenny Design Workshops develop new products and designs in:-

Home Furnishing Textiles
Domestic Hardware and Hand Tools
Ceramics and Glass
Furniture, Plastics and Light Engineering
Packaging and Graphics
Jewellery, Silver and Giftware in many materials.

Assignments are accepted on a royalty or fee basis.



All of the products illustrated here were designed in Kilkenny and manufactured in Ireland. They may be purchased from the Kilkenny Shop, Kilkenny, or through leading stores.



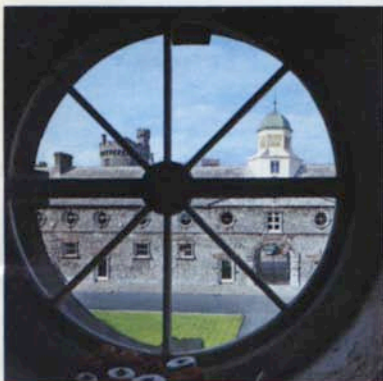
An Advisory Panel composed of distinguished designers and design critics from Ireland and abroad advise and adjudicate on quality standards.

Four scholarship places are reserved at the Workshops each year to give young Irish designers the opportunity of working with more experienced colleagues.

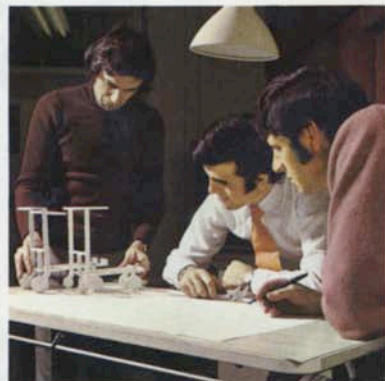


While prototypes and designs are made by hand, the promotion of handcrafts is not a main function of the Workshops. The requirements of quantity production are at all times a determining factor.

Designs are developed either in response to a specific enquiry from industry or to fill a need or opportunity seen to exist.



Over the years, designers and craftsmen from fourteen countries have worked at Kilkenny with Irish colleagues in the development of products of high quality and distinctive design.



The Workshops are sponsored by the Government with the object of improving design in industry and providing a showplace for good design.

They are located in a handsome crescent of 18th Century cut stone buildings which once comprised the stables, stores and dairy of Kilkenny's Ormonde Castle, just across the road.



**The Kilkenny Shop
Kilkenny Design Workshops
Castle Yard Kilkenny Ireland Tel: (056) 22118**

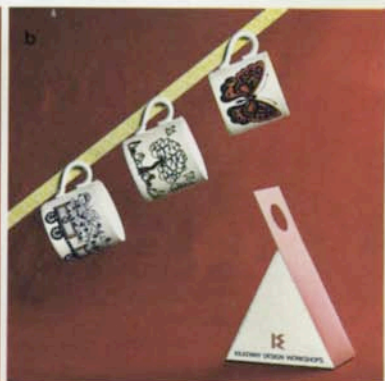
(a) Child's Breakfast Set. Cereal Bowl and Mug in "Bird Tree" design. Children delight in discovering and counting the birds.

(b) Coffee Mugs. Each comes in distinctive gift/carry pack. Specify design: Flower Train, Bird Tree or Butterfly.

(c) Ceramic Salt & Pepper Shaker. Gaily decorated in blue and orange.

(d) Kilkeny Kitchen High Strength Stoneware. Tea/coffee pot, cup and saucer, soup bowl, two plate sizes.

(e) Kilkeny Kitchen Tea Pot Set. Teapot, cream jug and sugar bowl in black, white or brown earthenware.



(a) **Kilkenny Kitchen Ovenproof Irish Stew Pot**, in warm brown finish. A handsome oven to table casserole, 4 pint capacity, complete with traditional recipe for Irish stew.

(b) **Ovenproof Casseroles** designed to grace the table, natural stone colour, sizes 1½ pint and 2 pint. The long handle saucepan in small size only.

(c) **Kilkenny Kitchen Camp Fire Coffee Pot**. Cream jug and sugar bowl with matching mug.

(d) **Studio Pottery Selection**. Each piece distinctive and hand made. Wind candle holder, spice jar and matching goblets (5 goblets complete set).



a



b



c



d



e



f



g



h



m



n

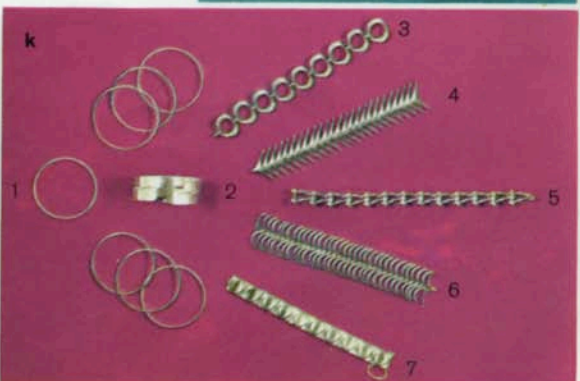
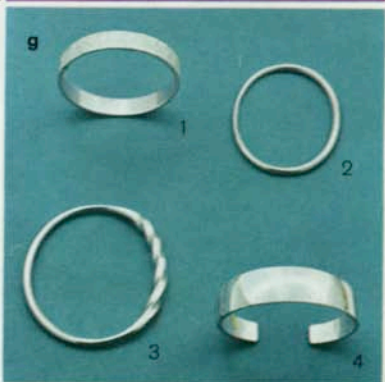


o





Gold and Silver from Kilkenny. Selection from a wide range of hand-wrought gold and silver jewellery – details and prices on enclosed order form.



Gold and Silver from Kilkenny

Selection of hand-wrought Kilkenny sterling holloware made to order.

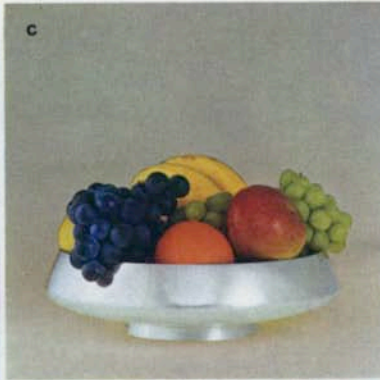
(a) Large Sauceboat

(b) Small Sauceboat

(c) Fruit Bowl

(d) Sauceboat and ladle on rosewood base

(e) Wine Jug and six goblets on rosewood tray.



Gold and Silver from Kilkenny

Selection of hand-wrought Kilkenny sterling holloware made to order.

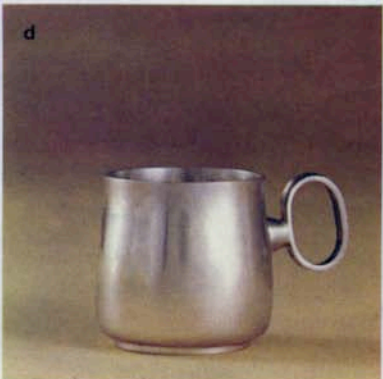
(a) Wine Goblet

(b) Liqueur Goblet

(c) Wine Goblet

(d) Christening Mug

(e) Wine Jug



Gold and Silver from Kilkenny

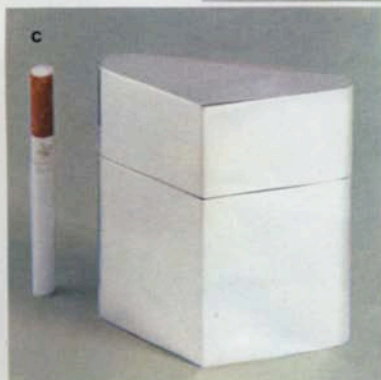
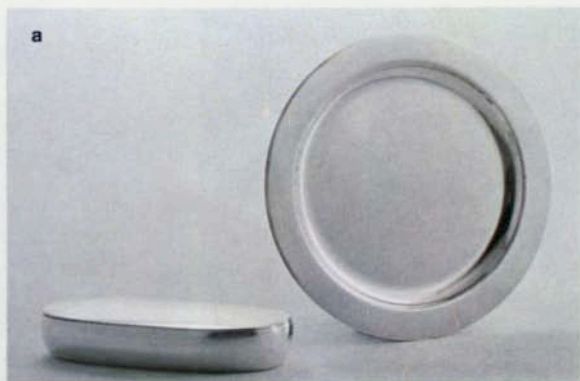
Selection of hand-wrought Kilkenny sterling holloware made to order.

(a) Oval lidded dish and plate

(b) Napkin rings; wide band, wire loop, double band, small wine coaster

(c) Triangular cigarette box

(d) Teapot, Water Jug, Coffee Pot



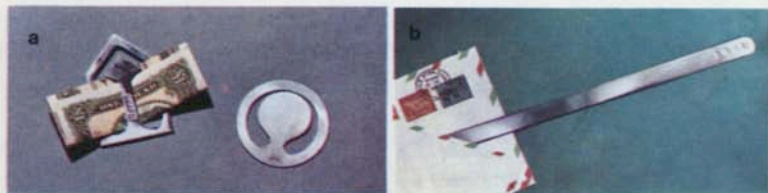
Gold and Silver from Kilkenny
Selection of hand-wrought Kilkenny sterling holloware made to order.

(a) Money Clip: triangular and round

(b) Paper Knife

(c) Fruit Bowl

(d) Water Jug



Hy Brasil: Blue, Yellow,
Orange, Brown



Jungle: Mauve, Green,
Orange, Red



Maytime: Red, Orange,
Turquoise, Green, Mauve



Lazy Daisy: Gold, Pink,
Olive, Blue



Kilkenny collection of Printed Cotton Curtaining 48" wide. Collection comprises 39 fabrics, 100% cotton, choice of designs and colours.

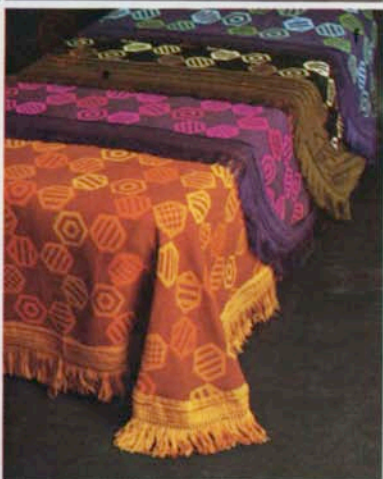
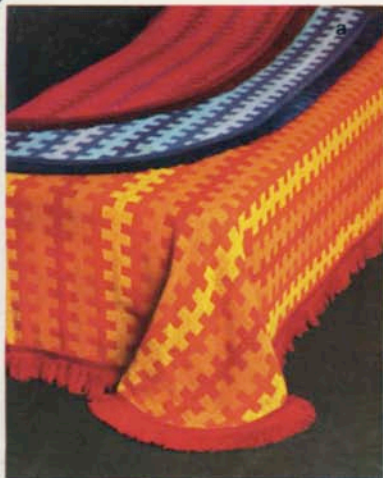
Irish Rose: Brown, Blue, Green, Red, Grey



Strawberry: Blue, Orange, Turquoise, Red



Flower Train: Brown, Blue, Green, Red, Orange



(a) Patchwork. Jacquard fringed bedspread. Reversible. 100% wool. Colours; plum, green, brown, gold. Sizes: 76" x 104", 96" x 104" and 104" x 112"

(b) Kilcar: Textured handwoven pure wool bedspread. Colours; red, blue, gold. Size: 76" x 104."

(c) Foxford. Jacquard fringed bedspread two toned geometric design, reversible, 100% wool. Colours; brown, orange, blue, shocking, green, tan. Sizes: 70" x 100" and 90" x 100"

(d) Cashel. Jacquard fringed bedspread. Geometric design. 100% wool. Colours; green, gold, blue. Sizes: 76" x 104", 96" x 104" and 104" x 112"

(e) Dripsey. Single weave light weight wool bedspread. Colours; orange-cyclamen, blue-green, yellow. Sizes: 70" x 100" and 90" x 100"

(f) Kilkenny. Folkweave fringed bedspread 100% wool. Colours; orange-brown, blue-green, brown-white, pink, wheat. Sizes: 76" x 104", 96" x 104" and 104" x 112"



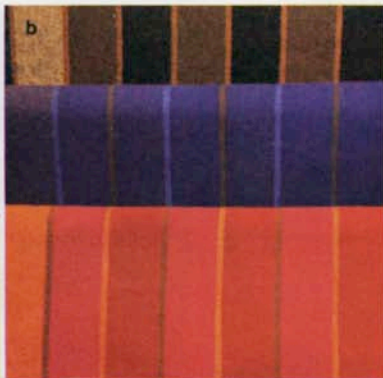
(a) Featherweight mohair rugs by Cushendale. These wool and mohair 48" x 72" rugs are perfect gifts, light as a feather, warm as toast. Luscious shades of gold plaid, blue/green check, orange plaid, light blue plaid, fuschia check, blue plaid, orange check, blue/mauve check.



(b) Lightweight fine worsted pure wool car rugs from Killarney Woollen Mills. 48" x 72" Colours: red, blue, brown, gold.



(c) Handwoven mohair rugs from Donegal Design. Striped design over three colourways. 48" x 72" red, gold, blue/green.



2
 4
 1 Turq.
 2
 4 Turq
 1
 4 Turq
 2

15

(a) Handwoven cushion covers. 100% wool in brown/ white. Size: 15" x 15".

Handwoven shoulder bags; textured boucle stripe size: 14" x 16". Colours: red, gold, blue/ green.

(b) Wide stripe pure wool blanket from Kerry Woollen Mills 72" x 100". Whipped edge. Colours: brown, blue, red.

(c) Glengariff car rugs – traditional plaids in contemporary colours. 58" x 68" 100% wool. Colours: lime, blue/black, pink, gold, blue/brown, mauve/green, orange.

(d) Foxford light-weight car rug. 100% wool. 48" x 72". Colours: brown, yellow, orange, blue/green, purple.

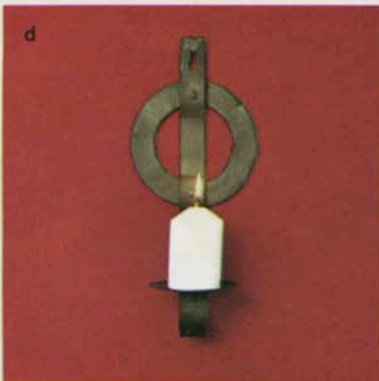


Left: Polaris Giant beach towel, 40" x 70" reversible. Colours: scarlet/navy, green/navy, tan/navy.

Right: Cluster beach towel 36" x 70" bath towel 27" x 50" in brown, magenta, blue/green.

Below: Kilkenny Kitchen terry hand towel 16" x 30", in red, green, blue and gold.





(a) Cast Iron Trivet Warmer

(b) Cast Iron Sculpted Male and Female Candleholder

(c) Wrought Iron Four Cup Chandelier

(d) Wrought Iron Wall Bracket Candleholder

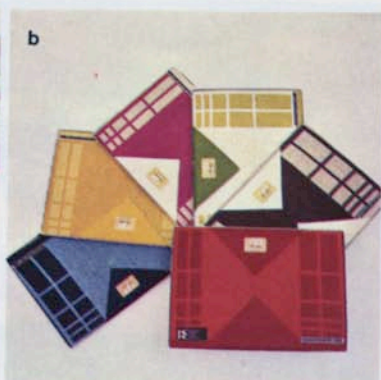
(e) Fireclay Ashtrays in three sizes for home or contract furnishing.

(f) Architects' Hand Crafted Kilkenny Black Marble Ashtrays in three shapes, square, round and hexagonal.

(g) Cast Iron Invertible Candleholder

(h) Hand Crafted Fireclay Garden Flower Pot





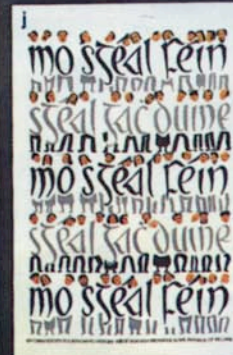
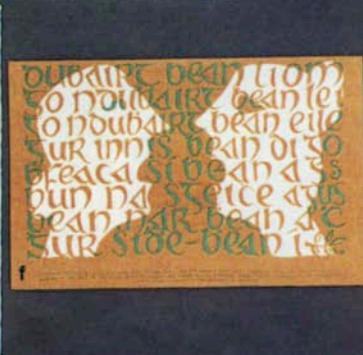
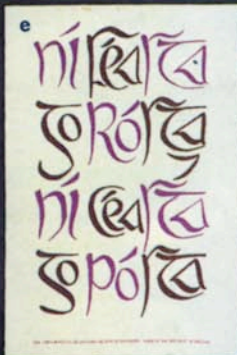
Kilkenny Design in Hand Turned Wood

(a) Mortar and Pestle for herbs (5" high.)

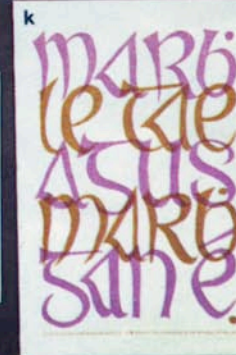
(d) Selection of hand-crafted wood-ware. Beech Platters in three sizes 7", 10" and 12" diameter. Elm porridge bowl 5" diameter, Elm salad bowl 9" diameter. Elm napkin rings, Salt & Pepper Shakers, Egg Cups, Iroco Salt Shaker and Pepper Mill.

(b) Double weave reversible pure linen boxed luncheon sets, eight-piece, (four napkins, four mats); four-piece (four mats only). Colours: blue, gold, cerise, green, brown, orange.

(c) Single Weave Linen Place Mats. Boxed in four place settings (four mats, four napkins). Colours: yellow, white, red, natural, blue.



Kilkenny Design in Irish Linen Glass-Cloths. Translations of Irish sean fhocail (proverbs) on opposite page:



(a) Wren: The wren, the wren, the King of all birds
St. Stephen's Day was caught in the furze.

(b) Hills: Far off hills are green.

(c) Orpheus.

(d) Beetle: One beetle recognises another.

(e) Feast: There's no feast 'till a roast, there's no torment 'till marriage.

(f) Gossip: A woman said to me that a woman said to her that another woman said that a woman told her that she saw a woman at the butt of a thorn bush, a woman not a woman a fairy woman.

(g) Nose: Many a time a man's mouth broke his nose.

(h) Hair: Twisting, Curling, Branching, Long luxuriant streams of ringlets from her crown to her shoe, a profusion of shining lustrous twining, heavy swathes of hair and if the colour of gold.

(i) Animals.

(j) History: My own history is everyman's history.

(k) Tea: Dead with the tea and dead without it.



Wall hangings based on rubbings from early Christian stone carvings.

(a) Rubbing from tombstone in St. Canice's Cathedral Kilkenny; mounted on natural wood dowels. Size: 7" x 2' 8".

(b) Rubbing from tombstone in Seir Keiran, Co. Offaly. Size: 23" x 32"; mounted on natural wood dowels.

a



b



(a) Hip-High Doll's House with four storage drawers in corrugated cardboard. Comes in convenient take-home pack and is light and easy to assemble.

(b) Child's Table and Stool in easily assembled corrugated cardboard. Very durable. Comes in red and blue.

(c) Rag Doll: Cut out and make rag doll in colours of red, blue, green and yellow, can also be used as glass cloth or wall hanging.

Visitors are welcome to the shop and in the demonstration hall where a potter, a weaver, a silversmith and a woodturner demonstrate their crafts. Large parties from schools, etc., are asked to make appointments a few days in advance in order to avoid overcrowding.



How to Buy. Either directly at the Kilkenny Shop or by mail on the enclosed order form which gives details of pricing, postage and packaging costs.

Photography: Ricky Stevens Studios
Printing: John Hinde Limited Dublin

