

# The Weather of Summer 2008

## (June, July and August summary)

### **Another very wet summer everywhere; dull with few warm days**

For the second successive summer, rainfall totals were above normal everywhere and were more than twice the average in the east and southeast of the country. Dublin Airport had its wettest summer since 1958, while it was the wettest at Cork Airport since records began there in 1962. Except for a few parts of the west and northwest, each of the summer months was wetter than normal. There were some exceptionally heavy daily falls throughout the season, particularly in the period from late July to mid-August. A daily fall of 90mm was recorded at Castlemahon, Co. Limerick, on July 31st, while Belderrig, Co. Mayo, measured 100mm on August 13th; Dublin Airport's fall of 76mm on August 9th was its highest daily fall for summer since June 1993. Rainfall was recorded over some parts of the country on each day between July 28th and August 21st. A total of between 42 and 48 wetdays (days with 1mm or more rainfall) was recorded at most stations for the 3-month period, compared with the normal range for summer of between 32 and 38 wetdays.

Mean air temperatures for the season were a little higher than normal for the 1961-90 period, but it was nevertheless the coolest summer since 2002 in many places. Mean temperatures for each of the summer months were within half a degree of normal generally. While mean minimum values for the summer were above normal everywhere, mean maximum temperatures were below normal except in the north and northwest. This reflects the absence of high daytime values throughout almost all of the summer period; maximum values were above 20°C generally on fewer than ten days, mainly in the period July 23rd to 28th.

Sunshine totals for the season were below normal almost everywhere and were well below normal in the east and south. It was the dullest summer for between 6 and 14 years at most stations. The first half of June was sunny, but very dull conditions prevailed thereafter. Almost all stations recorded their sunniest day of the season in the period June 5th to 7th.

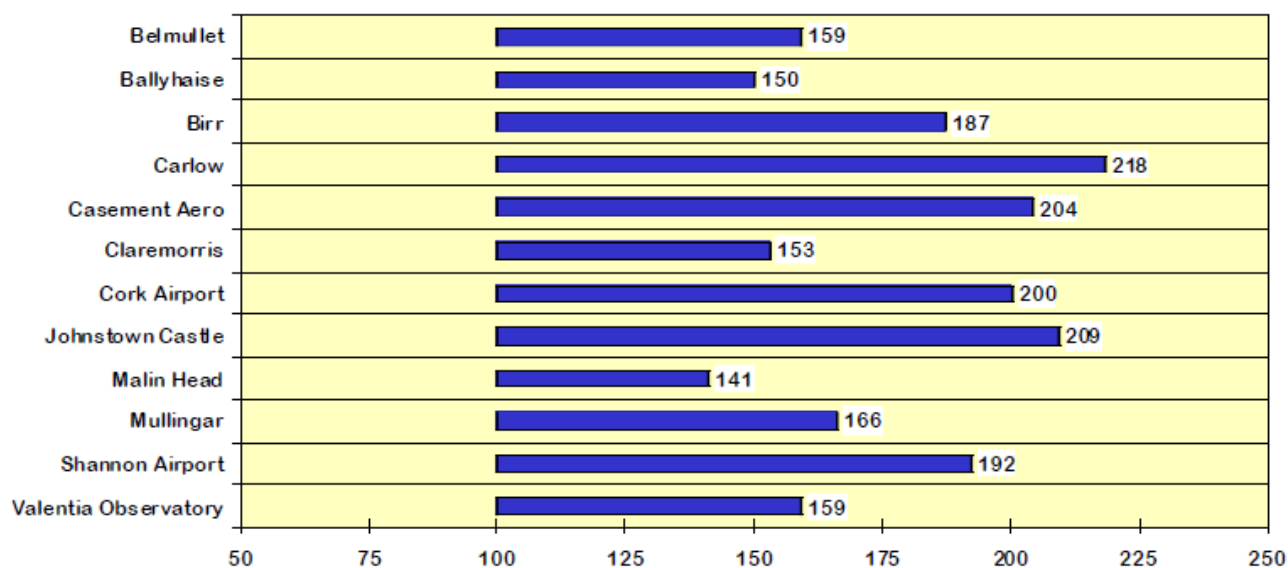
Poulter indices at long-term stations were below normal at each of the long-term stations of Dublin (Phoenix Park), Valentia Observatory, Malin Head and Birr. The Poulter index is a method of quantifying summer weather (June to August), using a formula based on mean temperature, rainfall and sunshine for each station, i.e. the higher the index, the 'better' the summer weather. Birr had its lowest value in a series extending back to 1915, while Dublin (Phoenix Park)'s value was almost the same as last year, the seventh lowest in its 128-year series.

#### **Extreme values at synoptic stations**

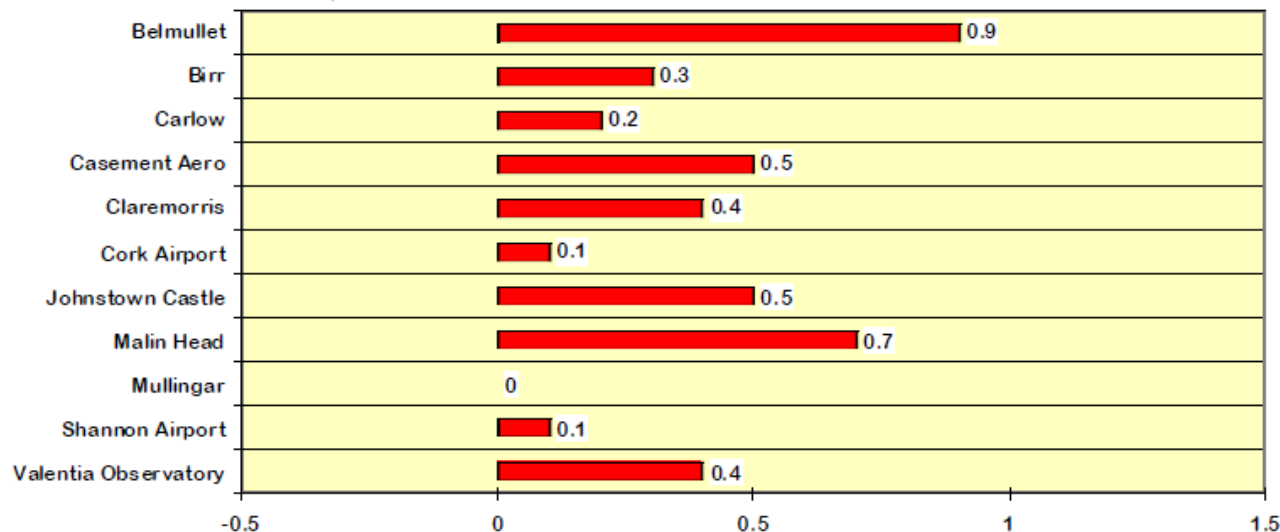
Rainfall	Highest seasonal total: 450mm at Cork Airport ( <i>its wettest summer since rainfall records began there in 1962</i> )
	Lowest seasonal total: 324mm at Malin Head ( <i>its wettest summer since 1998</i> )
	Highest daily rainfall: 76.2mm at Dublin Airport on August 9th ( <i>its highest daily fall for summer since June 1993</i> )
Temperature	Highest mean seasonal temperature: 15.2°C at Shannon Airport
	Lowest mean seasonal temperature: 13.2°C at Knock Airport
	Highest temperature: 25.2°C at Shannon Airport on July 24th
	Lowest air temperature: 1.5°C at Mullingar on June 5th ( <i>its lowest value for summer since 1991</i> )
Sunshine	Lowest grass minimum temperature: -2.6°C at Birr on June 5th and 15th ( <i>its lowest value for summer since 2001</i> )
	Highest seasonal total: 439 hours at Belmullet
	Lowest seasonal total: 343 hours at Knock Airport ( <i>its dullest summer since records began there in 1996</i> )
	Highest daily sunshine: 14.9 hours at Dublin Airport on June 20th

## Summer 2008 Percentage / Difference from 1961-90 monthly normals

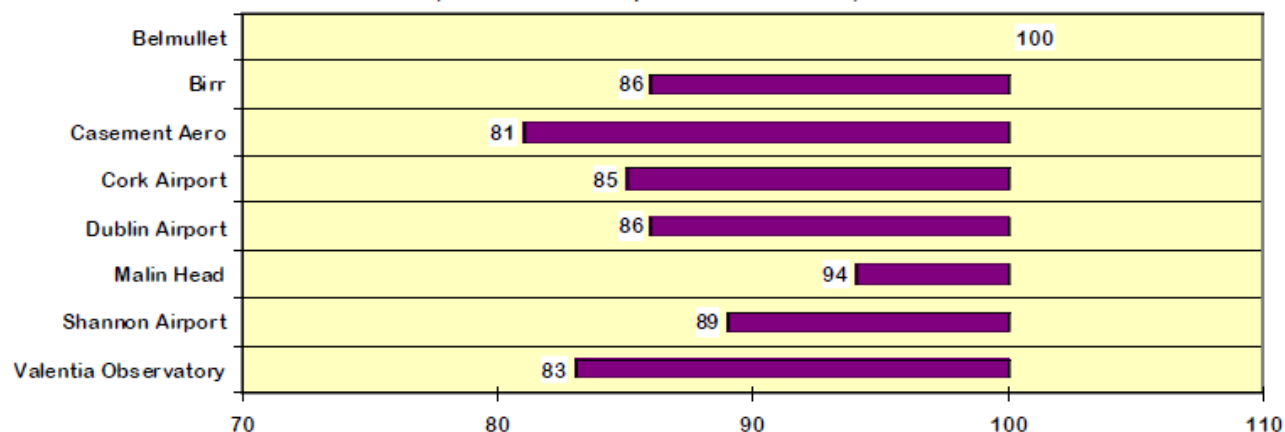
### Rainfall (% of normal for period 1961-1990)



### Temperature (°C difference from normal for period 1961-1990)



### Sunshine (% of normal for period 1961-1990)



Issued by the Climatology and Observations Division of Met Éireann on 1st September 2008  
This report is based on preliminary data from the synoptic weather stations operated by Met Éireann

A detailed summary is available in the *Monthly Weather Bulletin*

For more information, contact Met Éireann at 01-8064200 or e-mail: [climate.enquiries@met.ie](mailto:climate.enquiries@met.ie) website: [www.met.ie/climate](http://www.met.ie/climate)