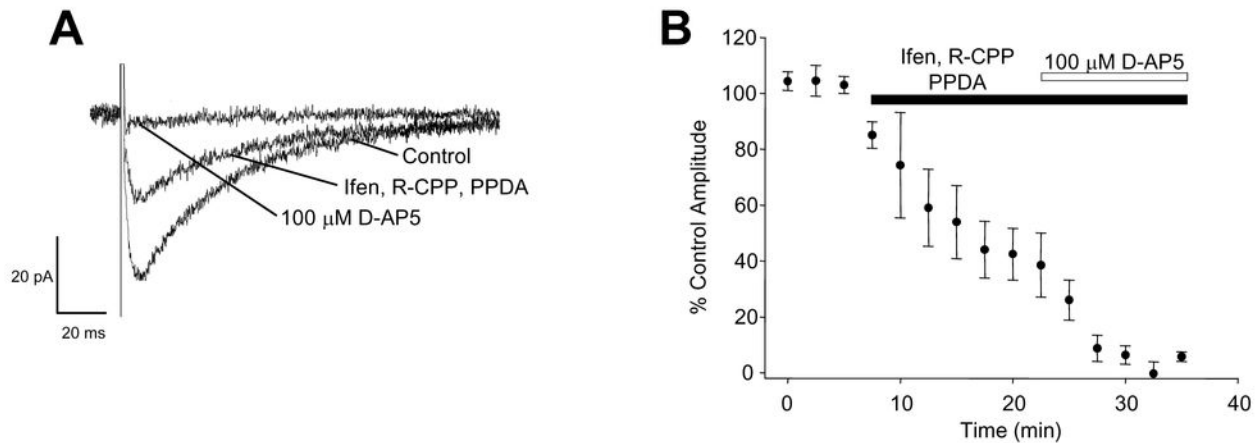


Supplemental Figure 4



Supplemental Figure 4. The EPSC recorded in the presence of ifenprodil, R-CPP and PPDA is blocked by D-AP5 (A), Traces illustrating NMDAR-EPSCs recorded in ifenprodil, R-CPP and PPDA and following the addition of 100 μ M D-AP5. (B), Graph of averaged data from 4 cells illustrating NMDAR-EPSC amplitude during application of ifenprodil, R-CPP, PPDA and D-AP5.