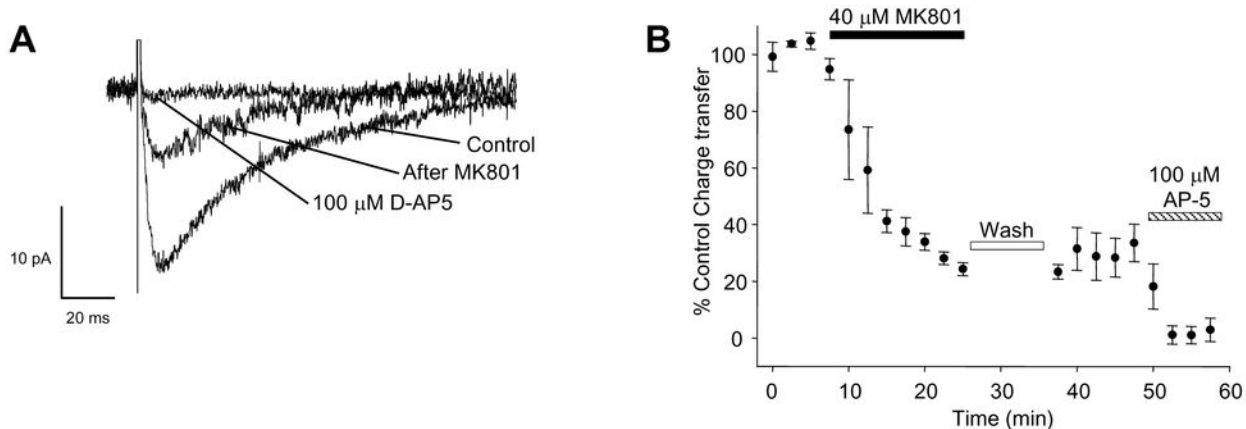


Supplemental Figure 1



Supplemental Figure 1. The EPSC recorded following MK801 application and washout is blocked by D-AP5 (**A**) Traces illustrating NMDAR-EPSCs recorded in control conditions, following MK801 application and washout and in the presence of 100 μ M D-AP5. (**B**) Graph of averaged data from 4 cells during MK801 application and washout, followed by application of D-AP5.