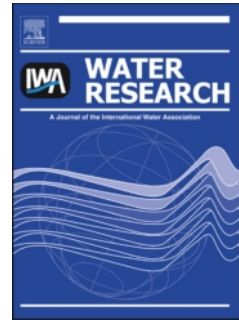


# Accepted Manuscript



Title: Nutrient loading on subsoils from on-site wastewater effluent, comparing septic tank and secondary treatment systems

Authors: L.W. Gill, N. O'Luanaigh, P.M. Johnston, B.D.R. Misstear, C. O`Suilleabhain

PII: S0043-1354(09)00183-3

DOI: [10.1016/j.watres.2009.03.024](https://doi.org/10.1016/j.watres.2009.03.024)

Reference: WR 7342

To appear in: *Water Research*

Received Date: 16 January 2009

Revised Date: 16 March 2009

Accepted Date: 16 March 2009

Please cite this article as: Gill, L.W., O'Luanaigh, N., Johnston, P.M., Misstear, B.D.R., O`Suilleabhain, C. Nutrient loading on subsoils from on-site wastewater effluent, comparing septic tank and secondary treatment systems, *Water Research* (2009), doi: 10.1016/j.watres.2009.03.024

This is a PDF file of an unedited manuscript that has been accepted for publication. As a service to our customers we are providing this early version of the manuscript. The manuscript will undergo copyediting, typesetting, and review of the resulting proof before it is published in its final form. Please note that during the production process errors may be discovered which could affect the content, and all legal disclaimers that apply to the journal pertain.

1 **Nutrient loading on subsoils from on-site wastewater**  
2 **effluent, comparing septic tank and secondary treatment**  
3 **systems**

4  
5  
6 L.W. Gill<sup>\*1</sup>, N. O’Luanaigh<sup>1</sup>, P. M. Johnston<sup>1</sup>, B.D.R. Misstear<sup>1</sup>, C. O’Suilleabhain<sup>2</sup>

7  
8 <sup>1</sup>Department of Civil, Structural and Environmental Engineering, University of  
9 Dublin, Trinity College, Dublin 2, Ireland. (E-mail: gilll@tcd.ie)

10 <sup>2</sup>Corós Environmental Engineering, Kearney’s Cross, Ballinacurra, Midleton, Co.  
11 Cork, Ireland.

12  
13 \* Corresponding author:

14 Tel: 00353 18961047

15 Fax: 00353 16773072

16 Email: [gilll@tcd.ie](mailto:gilll@tcd.ie)

17  
18  
19

20 **Abstract**

21 The performance of six separate percolation areas was intensively monitored to  
22 ascertain the attenuation effects of unsaturated subsoils with respect to on-site  
23 wastewater effluent: three sites receiving septic tank effluent, the other three sites  
24 receiving secondary treated effluent. The development of a biomat across the  
25 percolation areas receiving secondary treated effluent was restricted on these sites  
26 compared to those sites receiving septic tank effluent and this created significant  
27 differences in terms of the potential nitrogen loading to groundwater. The average  
28 nitrogen loading per capita at 1.0 m depth of unsaturated subsoil equated to 3.9 g  
29 Total-N/d for the sites receiving secondary treated effluent, compared to 2.1 g Total-  
30 N/d for the sites receiving septic tank effluent. Relatively high nitrogen loading was,  
31 however, found on the septic tank sites discharging effluent into highly permeable  
32 subsoil that counteracted any significant denitrification. Phosphorus removal was  
33 generally very good on all of the sites although a clear relationship to the soil  
34 mineralogy was determined.

35

36 **Keywords** nitrogen; phosphorus; on-site wastewater; septic tank; percolation; subsoil

37

38

39 Changes / comments made shown in blue

## 40 **1. Introduction**

41 [All paragraphs in this section have been amended and shortened and several refs have been  
42 removed such as (Cogger and Carlilse, 1984; Wolf et al., 1998; Department of the Environment,  
43 1999; Manassaram, et al., 2006, Swartz et al., 2003].

44 Groundwater is an important resource in Ireland which is at risk from the increasing numbers of  
45 decentralized houses and their respective on-site wastewater treatment systems. Domestic  
46 wastewater from over one third of the population is treated by on-site systems and, with more than  
47 25% of all water supplies provided by groundwater (EPA, 2005), the protection of groundwater  
48 resources from contamination by domestic wastewater effluent is imperative. The unsaturated  
49 subsoil above the water table or bedrock into which on-site effluent is discharged (i.e. the  
50 percolation area) is therefore an integral part of the overall on-site treatment system, particularly  
51 since the main aquifers in Ireland occur in fissured or fractured bedrock formations overlain by  
52 subsoils of variable thickness and permeability (Misstear and Daly, 2000).

53 Groundwater needs to be protected from nitrogen pollution for both ecological reasons (nutrient  
54 enrichment of sensitive surface waters) and health based reasons, the latter mainly due to a  
55 perceived link between nitrate concentrations and methaemoglobinemia (“blue-baby syndrome”),  
56 increased incidence of cancer, adverse reproductive effects, and other possible effects. Indeed the  
57 limit for maximum nitrogen concentrations in groundwater is often founded on health based  
58 grounds at 50 mg-NO<sub>3</sub> /L as defined by the EU Drinking Water directive (98/83/EC) and WHO  
59 guideline value (2006). There is increasing scepticism, however, as to the simple link that has been  
60 made in the past between drinking nitrate in water and methemoglobinemia due to the generally  
61 poor correlation between drinking-water nitrate and blue-baby syndrome (L’hirondel and L’hirondel,  
62 2002; Fewtrell, 2004) and that numerous other factors such as hereditary enzyme deficiencies,  
63 protein intolerance and a variety of trace chemicals are now known to cause the disorder (Avery,

64 1999; Knokeleoch et al., 2000; Ward et al., 2005). Elevated nitrate concentrations in groundwater  
65 however, are an indicator of wastewater or agricultural pollution and also indicate potential  
66 microbial risks if the groundwater is used as a drinking water supply.

67 In temperate fresh waters, dissolved phosphorus tends to be the limiting nutrient (Schindler,  
68 1977) and excess loading onto lakes and rivers can initiate algal blooms and generate negative  
69 aesthetic and eutrophic conditions in such water bodies. In Ireland groundwater forms the baseflow  
70 of rivers, with annual average contributions ranging from less than 30% of total river flow where  
71 the catchment is underlain by poorly productive aquifers to over 80% where there are regionally  
72 important aquifers in good hydraulic connection to the river (Fitzsimons and Misstear, 2006).  
73 Therefore, groundwater must be protected from phosphorus pollution.

74 A septic tank acts primarily as a settlement chamber providing quiescent, anaerobic conditions  
75 that facilitate the reduction of the organic and suspended solids content of wastewater (Goldstein  
76 and Wenk, 1972; Viraraghavan, 1976; Canter and Knox, 1985). The environment within the septic  
77 tank is, however, largely ineffective in reducing the nutrient loading of the wastewater, acting only  
78 to convert the influent organic nitrogen to ammonium achieving little total nitrogen removal across  
79 the process (Lawrence, 1973; Canter and Knox, 1985; Beal et al., 2005; McCray et al., 2005).  
80 Equally, the anaerobic conditions in the tank convert most of the influent phosphorus, in the form of  
81 both organic and condensed phosphate (polyphosphate), to soluble orthophosphate which passes out  
82 in the effluent (Willhelm et al., 1994; Zanini et al., 1998; Beal et al., 2005). A secondary treatment  
83 system can be installed as an alternative to a septic tank or to provide subsequent treatment of septic  
84 tank effluent prior to discharge to subsoil. The controlled aerobic environment for the accelerated  
85 microbial degradation of organic matter and often, nitrification of ammonia does not, however,  
86 result in a significant reduction in the total nitrogen loading across the process. Equally, most  
87 package wastewater treatment systems are not generally designed to remove phosphorus, although

88 some phosphorus reduction (around 15%) is usually achieved in bacterial assimilation, precipitation  
89 and adsorption (Metcalf and Eddy, 2003).

90 The soil treatment system, comprised of a series of subsurface percolation trenches, is a crucial  
91 component of the gravity flow treatment system with much research concentrating on the flow of  
92 effluent and the mechanisms of pollutant attenuation within the subsoil (Jenssen and Siegrist, 1990;  
93 Beal, et al., 2005). The biogeochemical mechanisms for purification and hydraulic performance are  
94 complex and have been shown to be highly influenced by the biomat zone which forms at the soil-  
95 gravel interface along the base and wetted sides of the percolation trenches. Reduced percolation  
96 rates through the biomat due to clogging as a result of anaerobic activity can cause the effluent to  
97 pond above the biomat but leaves unsaturated conditions below, for aerobic degradation processes  
98 to operate on percolating effluent (Bouma, 1975; Siegrist and Boyle, 1987; Beal et al., 2008). The  
99 development of a biomat takes several months but will eventually reach a steady state equilibrium  
100 (Hillel, 1980) which the Long Term Acceptance Rate (LTAR) - the basis of several design codes in  
101 Europe (CEN, 2006) and elsewhere – attempts to define. There is a clear relationship between the  
102 organic loading rate and rate and extent of biomat development and so the provision of secondary  
103 treatment before the percolation trenches reduces the rate and extent of biomat growth (Siegrist and  
104 Boyle, 1987; Jantrania and Gross, 2006). The removal efficiencies of nutrients in unsaturated  
105 subsoil can be limited (Jenssen and Siegrist, 1990; Beal et al., 2005) although nitrification of septic  
106 tank effluent however, is also commonly reported in the unsaturated zone beneath the biomat (Pell  
107 and Nyberg, 1989b; Van Cuyk et al., 2001). Other studies have shown that denitrification of  
108 percolating nitrates in soils tends to occur more readily in fine-textured soils (i.e. clays and  
109 silt/clays) compared to coarse-textured soils (silts and sands) (Tucholke et al., 2007).

110 The attenuation of ortho-P within the subsoil treatment system is controlled by soil adsorption  
111 and mineral precipitation and is dependent not only on its clay content, but also on the presence of  
112 Al, Fe, or Mn in acidic soils and the presence of Ca in alkaline soils (Robertson, 2003). Phosphorus

113 precipitation is dominated by iron and aluminium when  $\text{pH} < 6$  (Erickson et al., 2007) whilst at  $\text{pH}$   
114 levels  $> 6$  the reactions are a combination of physical adsorption to Fe and Al oxides and  
115 precipitation as sparingly soluble calcium phosphates onto calcareous sands (Arias et al., 2001).  
116 Other studies have shown that conditions of low redox potential (i.e. saturated, partially anaerobic)  
117 reduce the mineralization rate and increase the adsorption rate (Pell and Nyberg, 1989a).

118 Two sequential projects funded by the Irish EPA have been undertaken to test out the efficacy  
119 of on-site wastewater treatment systems on a range of sites with subsoils of different percolation  
120 characteristics receiving domestic wastewater effluent. The research objectives addressed by this  
121 paper were to investigate the nutrient loadings occurring at different depths beneath the different  
122 percolation trenches and assess the implications in terms of groundwater pollution with respect to  
123 housing development in unsewered, rural areas.

124

## 125 **2. Methods**

### 126 2.1. Site selection and construction

127 Six separate households in Ireland were used for the research projects on sites of varying subsoil  
128 permeability. In all sites new on-site treatment systems were constructed by the research team at the  
129 beginning of each study. Two-chamber septic tanks were installed on Sites 1, 2 and 3 while  
130 secondary treatment systems were installed on the other sites: a rotating biological contactor, RBC  
131 (Biodisc<sup>®</sup>, Klargester) on Site 4 and peat filters (Puraflo<sup>®</sup>, Bord na Mona) on Sites 5 and 6. The six  
132 sites were chosen to cover a range of subsoil conditions as characterised by the British Standards  
133 Institution's BS5930 (1999) classification system (Table 1). The percolation T-values of the  
134 different subsoils span the range 4 to 60 as determined by the onsite standardised Irish falling head  
135 percolation test, the T-test (Mulqueen and Rodgers, 2001), equivalent to field saturated hydraulic  
136 conductivities in the range 0.08 to 1.05 m/d (Elrick and Reynolds, 1986). The effluent from all six  
137 sites (three sites discharging septic tank effluent (STE) and three sites discharging secondary treated

138 effluent (SE) from packaged plants) entered percolation trenches at 2.45 m centres built to EPA  
139 specifications (EPA, 2000) consisting, in each case, of 110 mm diameter perforated PVC pipe sitting  
140 on a bed of 250 mm of washed gravel (20 to 30 mm diameter) in a 450 mm wide trench (see Fig. 1)  
141 at a slope of 1:200. The design specification was generally one 20 m long trench per person per  
142 household. The achievement of an equal loading rate on each trench was achieved by a distribution  
143 box specifically designed for the projects.

144

## 145 2.2. Instrumentation and sample analysis

146 The flow profile to the percolation areas from the septic tanks and secondary treatment systems was  
147 measured using tipping bucket flow-gauges (Unidata, Australia) placed underneath each of the four  
148 distribution box outlets at each site. Automatic samplers (Bühler Montec) collected 24 hour  
149 composite samples of STE and SE. Suction lysimeters (Soilmoisture Equipment Corporation) were  
150 installed at the start (0 m), middle (10 m) and end (20 m) of each trench to nominal depths of 0.3, 0.6  
151 and 1.0 m below the invert of the percolation trenches respectively (Fig. 1a). Lysimeters were  
152 installed at more frequent intervals at Sites 1 and 4 corresponding to distances 0, 5, 10 and 15 m (and  
153 20 m for Site 1) along each trench, in order to refine the analysis of biomat spread. The careful  
154 installation of these lysimeters into the undisturbed subsoil directly beneath the trench was essential  
155 to avoid creating artificial preferential flowpaths and to ensure that they were located within the  
156 effluent plume. At each site nine tensiometers (Soil Measurement Systems) were installed at the  
157 same three sampling depths along separate trenches in order to obtain a profile of soil moisture  
158 tension across the percolation area. Meteorological variables (rainfall, temperature, wind speed,  
159 relative humidity, solar radiation and sunshine hours) on each site were recorded by a weather  
160 station (Campbell Scientific) and tipping-bucket type rain gauges (Casella).

161 The lysimeters were put under a suction of 50 kPa using a vacuum-pressure hand pump which  
162 was low enough to prevent the extraction of bound moisture that would otherwise be unavailable to



163 recharge. Sampling was carried out the following day using a vacuum-pressure pump and the  
164 samples were collected in sterilised plastic sample tubes, stored in a cool box before being taken  
165 directly to the laboratory for analysis. All STE, SE and soil moisture samples were analysed for  
166 ammonium, nitrite, nitrate, chemical oxygen demand, orthophosphate and chloride using a Merck  
167 Spectroquant Nova 60<sup>®</sup> spectrophotometer and associated reagent kits. Samples were also tested for  
168 total nitrogen using a Hach Lange LT200 thermostat and spectrophotometer DR2800 to ascertain the  
169 fraction of organic and inorganic nitrogen present. Sites 2, 3, 5 and 6 were each studied for a period  
170 of 12 months, compared to Sites 1 and 4 which were studied over a longer period of 32 months in  
171 order to monitor any further biomat spread and trends in removal processes with respect to time.

172 Samples of the subsoils at different depths were analysed in Trinity College Dublin using X-ray  
173 diffraction analysis using a Phillips PW1720 X-ray generator with a PW1050/25 diffractometer and  
174 PW3313/20 Cu k-alpha anode tube, to reveal the respective mineral composition. Finally, at the end  
175 of the research studies on Sites 1 and 4, a specialist closed-circuit television (CCTV) company sent a  
176 camera down each percolation pipe to inspect the extent of biomat development.

177

### 178 **3. Results and Discussion**

179 The extent of the active percolation area (i.e. spread of the biomat) first needed to be established in  
180 order, (i) to decide which of the lysimeters were sampling percolating effluent and, (ii) to factor in  
181 the effect of any rainfall dilution on the samples due to recharge through the subsoil

182

183

#### 184 **3.1. Extent of active percolation area and effect of dilution by rainfall**

185 Chloride was used initially as a tracer to identify the extent of the percolation area which was  
186 receiving wastewater effluent. The results of the laboratory analysis for Cl at the different sample  
187 positions at the three different depth planes and along each trench were analysed with respect to time.

188 From this a conceptual model (assuming isotropic and homogeneous soil properties) was derived for  
189 the analysis of the attenuation of the percolating effluent according to how far across the percolation  
190 area the biomat was spreading. The concentrations of all the other measured parameters were then  
191 averaged across all trenches and across all sampling positions where the effluent was known to have  
192 reached at the 0.3, 0.6 and 1.0 m depth planes.

193 An example of the method of calculating loads is shown in Fig. 2(a) for Site 2, where similar  
194 chloride loading rates for all planes indicate that the effluent had spread across the whole length of  
195 the percolation area. Similar analysis of Cl levels carried out on Sites 3, 4, 5 and 6 showed decreased  
196 concentrations at the 5, 10 or 15 or 20 m sample distances along the same depth planes, as shown on  
197 Fig. 2(b), suggesting that the average results across the trenches and depth planes recorded at the 0 m  
198 sampling positions only would be the more representative way to assess effluent attenuation on those  
199 sites. At Site 1 the results showed that the biomat in the trenches receiving STE had spread past the  
200 0, 5 and 10 m sampling positions but not as far as the 15 or 20 m positions.

201 Loading rates of nitrogen and phosphorus compounds at the different depths were then  
202 calculated on a daily basis according to a mass balance of effluent flow plus any rainfall recharge.  
203 The extent of effluent dilution in the subsoil from effective rainfall was calculated using rainfall and  
204 evapotranspiration values obtained on site and calculations based on the Penman-Monteith method  
205 (FAO, 1998). Effective rainfall was calculated by subtracting the daily actual evapotranspiration and  
206 accumulated soil moisture deficit figures from the daily rainfall measurement.

207 The effect of dilution on the attenuation of the percolate was then calculated by determining the  
208 zone of contribution around each trench. The disparity in Cl concentrations between the effluent as it  
209 leaves the septic tank and where it was sampled at the three depth planes in the subsoil beneath the  
210 percolation trench was examined during both dry periods and periods of sustained effective rainfall.  
211 The reduction in Cl concentration with subsoil depth during periods of zero effective rainfall was  
212 attributed to the physical straining of colloidal matter in both the biomat and underlying subsoil. The

213 difference, therefore, between data showing the reduction in Cl concentration between the trench  
214 influent (i.e. STE, or SE) and at the three depth planes during periods of effective rainfall compared  
215 to periods of zero effective rainfall was used to calculate the percentage reduction in Cl  
216 concentration due exclusively to dilution. Having quantified the dilution factors at each depth plane,  
217 a simple mass balance approach was adopted to estimate the zone of contribution ( $A_c$ ) of effective  
218 rainfall at each depth plane. For example, on Site 1 using the average concentration of Cl measured  
219 in rainfall of 4.0 mg/L the areal zone of contribution of effective rainfall for the 0.3 m depth plane  
220 receiving STE was estimated at 23.8 m<sup>2</sup>. Using a biomat length of 11 m (as indicated by high Cl  
221 concentrations continually measured at the 0, 5 and 10 m sample locations along the trenches and  
222 corroborated by a CCTV investigation inside the percolation pipework), this equated to a zone of  
223 contribution of effective rainfall of an extra 0.15 m on both sides of each of the 0.45 m wide trenches  
224 at the 0.3 m depth plane. Similarly, calculations carried out for the 0.6 m and 1.0 m depth planes  
225 below each percolation trench showed that the effluent plume had dispersed to an estimated 0.4 m on  
226 the sides of the trenches at the 0.6 m depth plane and 0.53 m on the sides at the 1.0 m plane. These  
227 calculations were carried out on all sites to yield accurate lengths of the biomats along the trenches,  
228 as shown on Table 2. It is evident from the data that the reduced organic loading brought about by  
229 the additional secondary treatment of wastewater prior to discharge to the percolation areas had  
230 inhibited the formation of a biomat preventing distribution of the effluent along the entire base of the  
231 trenches. The installation of the secondary treatment systems greatly reduced the organic load on the  
232 percolation areas as expected with an average 77% lower COD loads being discharged to the  
233 trenches on Sites 4, 5 and 6 compared to the sites with septic tanks. The effluent only reached up to a  
234 maximum of 4 m along the length of the SE percolation trenches with a considerably shorter biomat  
235 development for the higher permeability subsoil sites.

236 Examination of the soil moisture tension values from the tensiometers installed at the different  
237 sample positions (front, middle and back) along the trenches were also used to corroborate the

238 conceptual models for each site. As can be seen in Figure 3(a), the tensiometers at the three depth  
239 planes at the 17.5 m sample location where no effluent was recorded on Site 1 responded directly to  
240 variations in effective rainfall over the total sampling period. By comparison, the tensiometers at the  
241 2.5 m sample location (Figure 3(b)) show some response during high rainfall events but in general  
242 the readings remained more stable across the trial period as the subsoil soil moisture conditions were  
243 influenced more by the percolating effluent than by the contribution of effective rainfall. Hence,  
244 under those percolation trenches receiving STE, it was physical, chemical and biological processes  
245 rather than dilution that were the more dominant attenuation processes operating in the subsoil as the  
246 effect of rainfall dilution on the percolating effluent in the subsoil was relatively small.

247

### 248 3.2. Nitrogen loadings and removal

249 The mean daily on-site wastewater flow rates on the six sites as measured continuously over the  
250 sampling periods by the instrumentation are shown on Table 2. The effective areal hydraulic  
251 loadings rates have then been calculated on the basis of the lateral effluent spread on the biomat  
252 spread and width of effluent spread at the 1.0 m depth plane. The average total-nitrogen loads of  
253 STE and SE discharged into the percolation trenches on each site over the research periods are also  
254 shown in Table 2. When these were compared to the respective loading rates after percolating  
255 through 1 m depth in the subsoil (taking into account the dilution by effective rainfall) significant  
256 differences were found between the sites receiving STE and SE, particularly when comparing the  
257 sites of moderate permeability (Sites 2 and 3 (STE) and Sites 5 and 6 (SE)). The nitrogen in the STE,  
258 discharging mainly in ammoniacal form (with approximately 20% organic-N), was seen to nitrify in  
259 the gravel and in the upper 0.3 m of subsoil and then denitrify in the sporadically saturated  
260 conditions below the biomat, often termed anoxic microsites (Parkin, 1987), where biological  
261 oxygen demand exceeds supply. In comparison, the secondary treatment systems on Sites 4, 5 and 6  
262 were clearly discharging at least partially nitrified effluent but while the SE underwent further slight  
263 nitrification within the subsoil, the nitrate remained largely unchanged as it percolated down through

264 the subsoil, leaving potentially higher total-N loads to the groundwater (see Tables 2 and 3). The  
265 equivalent reduction in total-N load between the SE and after 1.0 m of unsaturated subsoil on Sites  
266 4, 5 and 6 was only 25%, 9% and 24% respectively compared to 59%, 76% and 89% on the STE  
267 sites. Fig. 4 compares this difference between the percolating STE on Site 2 to the SE on Site 5  
268 where total-N loads of 16.7 g/d were found at the nominal point of discharge to groundwater on Site  
269 5 compared to 6.8 gTotal-N/d at the same depth on Site 2. The inhibition to biomat formation along  
270 the percolation trench on the sites receiving SE would result in a reduction in microbial  
271 denitrification (promoted in the biomat by the reducing conditions). In addition, even if saturated  
272 conditions existed locally within the subsoils on Sites 4, 5 and 6, the organic load of the percolating  
273 effluent may not have been sufficient to support the facultative heterotrophs required for  
274 denitrification.

275 An interesting correlation can be seen in Table 2 between higher total-N loads per capita at 1 m  
276 depth below the base of trench and subsoil permeability (Table 1), for both STE and SE. This is  
277 particularly evident (see Fig. 5 and Table 3) on the highly permeable subsoil Sites 1 and 4. The SE  
278 again remained largely untouched in its nitrate form en route to the groundwater as expected, but the  
279 STE on Site 1 did not appear to be denitrify as thoroughly as on Sites 2 and 3 whilst nitrification was  
280 still occurring between the 0.3 and 1.0 m depth planes. The high permeability subsoil had muted the  
281 spread of the biomat even under a high organic loading promoting a relatively high hydraulic  
282 loading on that localized area but maintaining unsaturated aerobic conditions in the subsoil beneath  
283 unsuitable for denitrification of the effluent.

284 The average results from the sites show that the potential total-N load to groundwater beneath  
285 the percolation areas from the secondary treatment systems was approximately twice that compared  
286 to the sites receiving just septic tank effluent, or up to three times greater if the high permeability  
287 sites (which are rare in Ireland) are ignored. When the average total-N-removed is compared  
288 between the sites, the difference is more acute with the sites receiving STE shown to be removing

289 almost seven times (25 g/d) the average total-N than the subsoil receiving SE (3.63 g/d). If these  
290 figures are normalised with respect to population (as all the sites had different full-time residences),  
291 it is clear from Fig. 6 that there is a distinct difference with respect to nitrogen removal in the subsoil  
292 when comparing the discharge of STE and SE into the subsoil as represented by influent COD load  
293 per trench.

294 It should also be noted that the base of the plastic modules containing the Bord na Mona peat  
295 filters on Sites 5 and 6 had been sealed in order to collect all the percolated effluent to one outlet  
296 pipe before evenly distributing the effluent between the percolation trenches. This resulted in  
297 slightly flooded conditions in the base of the filter, conditions which promoted 51% reduction in  
298 inorganic-N loading through the peat filter on Site 5 and 25% reduction on Site 6. Such anoxic  
299 conditions in this shallow flooded zone are not typical for other types of secondary treatment  
300 systems and therefore the total-N load would normally be higher for SE, as revealed on Site 4.

301

### 302 3.3. Phosphorus loadings and removal

303 The secondary treatment systems on Sites 4, 5 and 6 had little effect on the ortho-P loadings of the  
304 STE, acting to reduce their respective influent loads by an average 12%. These package treatment  
305 systems are not usually designed to remove P, apart from the reduction that occurs as a result of  
306 biological assimilation.

307 The attenuation of ortho-P within the subsoil is controlled by soil adsorption and mineral  
308 precipitation, reactions that are closely related to soil pH (Robertson, 2003, 2008). A reduction in  
309 effluent pH often occurs across secondary treatment systems as a result of nitrification, evidence of  
310 which can be seen in Table 4, which could reduce the potential for ortho-P fixation in the subsoil.  
311 The pH values of the percolate after passing through 1 m of subsoil however, show an increase on all  
312 sites (with the exception of Site 3) which is not what would be expected if the pH change was  
313 attributed purely to the processes of nitrification / denitrification; denitrification should recover just

314 under half of the alkalinity lost by the process of nitrification and so a net decrease in pH might have  
315 been expected on Sites 1, 2 and 3. Sites 1 and 2 were both on limestone-derived subsoil which would  
316 account for the pH increase compared to Site 3 which is on metamorphic and granite-derived subsoil  
317 where the expected decrease in pH was indeed measured. As discussed previously, very little  
318 denitrification occurred on Sites 4, 5 and 6 and so the large pH rise on Site 5 was probably due to the  
319 influence of the soil and subsoil mineralogy on the percolate, as the subsoil was derived from  
320 predominantly limestone-rich glacial drift deposits (Conroy et al., 1970).

321 The results show that the majority of the phosphate removal on Sites 1, 2, 3 and 4 were  
322 achieved within the first 0.3 m of subsoil. X-ray diffraction analysis of the subsoil in Site 1 showed  
323 that it contained quartz, feldspars, chlorite and calcite with a small amount of swelling illite-  
324 smectite clay. This means that the subsoil below the percolation trench contained soil particles of a  
325 larger specific surface area which are more conducive to phosphorus adsorption, in addition to  
326 presence of calcite under the prevalent alkaline conditions. Particle size distribution (PSD) analysis  
327 of the subsoils on Sites 2 and 3 showed that they contained a higher clay content which may  
328 account for the greater percentage removal of ortho-P above the 0.3 m depth plane. The high  
329 phosphate removal in Site 4 is more surprising perhaps, as the mineralogy of the subsoil did not  
330 suggest significant potential for phosphate load removal: the subsoil is classified as sandy gravel at  
331 the 0.2 m depth plane with an overlying thickness of sandy silt up to ground level and X-ray  
332 diffraction analysis revealed no calcite or oxides of Al, Fe and Mn. The PSD analysis did reveal  
333 11% clay at 0.2 m depth plane, which may be partially responsible for sorption of the phosphate  
334 ions and a reduction in clay content with subsoil depth, mirroring the reduction in phosphorus  
335 fixation with depth. This could however, also be due to the fact that most of the  $\text{PO}_4\text{-P}$  compounds  
336 that could be fixed had already been bound in shallower depths. Interestingly, the high hydraulic  
337 loading on this site resulting from the limited spread of the biomat (see Table 2) also did not appear  
338 to affect the phosphate removal.

339 The phosphate removal through the subsoil at Site 6 was relatively low through the first 0.6 m of  
340 subsoil, particularly as the influent load was comparatively small on that site. PSD analysis of the  
341 subsoil showed it to contain a relatively low clay content, despite its low permeability (which was  
342 attributed to the high density of the matrix) and X-ray diffraction analysis revealed neither calcite  
343 nor oxides of Al, Fe and Mn. The comparatively low pH of the percolating effluent on Site 6, along  
344 with the high hydraulic loading, may explain the less efficient phosphate removal with depth.

345 The results at Site 5 stand out from the other sites as significant ortho-P concentrations (average  
346 6.9 mg/l) were picked up in the effluent after percolating through 1.0 m of subsoil. More ortho-P  
347 was removed in the 0.0 to 0.3 m depth interval than in the interval between the 0.3 to 0.6 m depth  
348 planes, which was attributed to the higher clay content in the upper layer. There was then a  
349 noticeable increase in ortho-P fixation between the 0.6 m and 1.0 m depth planes (Table 4). The  
350 results of X-ray diffraction analysis at this depth showed that while the subsoil contained calcite, it  
351 was devoid of Al, Fe and Mn oxides, hydrous oxides or dissolved ions and therefore, fixation would  
352 be confined to the high pH range – consistent with the alkaline conditions that did exist at Site 5. As  
353 at Site 6, this site also had a relatively high hydraulic loading due to the limited spread of the biomat  
354 and this may have contributed to the less effective phosphorus removal.

355 The potential for a reduction in phosphate removal over time - due to the available sites for  $\text{PO}_4\text{-P}$   
356 P adsorption sites becoming filled - was examined. The trend on Site 1 (Figure 7) shows that  
357 although there was a continuously high removal of  $\text{PO}_4\text{-P}$  between the STE and 0.3 m plane over the  
358 duration of the project, there is some suggestion of a slight reduction in phosphorus removal towards  
359 the end of the 32 month trial period at the 0.3 and 0.6 m depth planes (which would have been more  
360 highly loaded than the deeper 1.0 m plane). A similar examination on Site 4 over 32 months,  
361 however, showed no apparent reduction in removal performance even though the subsoil was more  
362 highly loaded and also did not appear to have a suitable mineralogy for phosphate removal. The



363 same constant phosphate removal performance was also measured through the subsoil on all the  
364 other sites, although they were only monitored for 12 month periods.

365

#### 366 3.4 Discussion

367 A significant difference was found between the nitrogen loadings in the subsoil and hence potential  
368 loadings to groundwater, when the percolation areas receiving septic tank and secondary treated  
369 effluent were compared. This reduction in nitrogen removal from percolating effluent which has  
370 undergone secondary treatment has also been discussed in other literature (Kristiansen, 1981; Beal  
371 et al., 2005; Jantrania and Gross, 2006). This research has shown that the average total inorganic  
372 nitrogen load after 1.0 m depth of unsaturated subsoil, was 3.9 g-N/d per capita for the sites  
373 installed with secondary treatment systems compared to 2.1 g-N/d per capita on the sites receiving  
374 septic tank effluent. These disparities become larger if the sites with fast percolating subsoil  
375 characteristics (which are relatively rare in Ireland) are discounted, yielding a comparison of 3.4 g-  
376 N/d per capita for the sites installed with secondary treatment systems compared to 1.1 g-N/d per  
377 capita on the sites receiving just septic tank effluent.

378 These loading figures can be compared to the E.U. Nitrates Directive 91/676/EEC (European  
379 Commission, 1990) to give an indication as to the maximum housing density that should be  
380 permitted. The Directive specifies that the annual limit for nitrogen application to ground is 170 kg-  
381 N/ha which equates to a stocking rate of 2 cows per hectare. This application is to the ground  
382 surface and the application limit is based on the assumption that the majority of the nitrogen is  
383 taken up by surface vegetation (crops), with little N leaching down to the groundwater. Indeed, a  
384 recent project in Ireland (Bartley, 2003) showed that approximately 10% of total-N applied at the  
385 surface from dairy cows made it to the groundwater. This is not the case, however, with on-site  
386 wastewater effluent which is introduced into the subsoil typically at depths of 0.6 to 1.0m below the  
387 ground surface and so is not intercepted by the vegetation. Hence, if a conservative estimate is

388 taken that the application limit stated in the Directive allows for a maximum of 10% of the total-N  
389 applied at the surface to make it past the root zone to the groundwater, a simple calculation yields  
390 that a maximum density of one 4-person household every 0.33 ha (~0.82 acre) for secondary  
391 treatment on-site systems would be at the nitrogen loading limit. The equivalent calculated density  
392 for households using septic tank systems is one household every 0.18 ha (~0.44 acre). These  
393 calculations imply that the density of houses using properly installed septic tanks is unlikely to  
394 reach that which would promote concerns with respect to Nitrates Directive whereas, a continuity of  
395 single acre plots using secondary treatment systems is perhaps a more realistic scenario in certain  
396 parts of the country. Furthermore, if the annual nitrogen loading is calculated on the percolation  
397 area alone, it equates to 284 kg-N/ha.yr for the secondary treated systems, which exceeds the nitrate  
398 application guidelines, compared to 153 kg-N/ha.yr for a household discharging to a septic tank and  
399 percolation area. It should be noted that the influence of high subsoil permeability was starting to be  
400 noticed for the septic tank effluent at Site 1 whereby the effluent was moving rapidly through the  
401 vadose zone and neither totally nitrifying and / or denitrifying. Hence, if nitrates in groundwater are  
402 a problem in a particular area then an upper limit on subsoil permeability limit with respect to the  
403 acceptability for STE discharge may need to be defined. It should be noted, that in parallel to the  
404 nutrient analysis, the microbiological quality of the percolating effluent was also analysed during  
405 the course of this project as reported in detail elsewhere. This revealed excellent removal of both  
406 viral and bacterial indicators after 1 m of unsaturated subsoil across all sites (whether receiving STE  
407 or SE) with only isolated incidences found at low concentrations at this depth.

408 If septic tanks are not the desired system for on-site treatment in a particular area, other methods  
409 can be employed specifically to target nitrogen removal from the secondary treated effluent. The  
410 results described above indicate that dispersal of secondary treated effluent by gravity flow results in  
411 only a small part of the percolation area used. Therefore, alternative means of dispersal such as low  
412 pressure drip irrigation or shorter trench lengths should be used to spread the effluent over a wider

413 area. Alternatively, nitrogen removal can be specifically targeted as part of the design of the package  
414 plants although this has extra operational and maintenance implications (for example, effluent  
415 recirculation to promote denitrification). Another concept that has been researched with some  
416 success is the addition of denitrification layers (comprised of waste cellulose solids) below the  
417 trench receiving secondary treated effluent (Robertson et al., 2000; Bedessem et al., 2005).  
418 Alternatively, the secondary effluent could be discharged into the root zone of plants as they will use  
419 some of the nutrient. This has obvious implications as to the use of the land, however.

420 The results from the study have shown that the phosphate is largely removed by the subsoils as a  
421 result of the mineralogy of the respective soils. Although, there was no strong evidence of the  
422 removal capacity decreasing after 32 months of operation, longer term studies on P plumes beneath  
423 on-site wastewater disposal systems have been carried out (Robertson 1998, 2008). Recently  
424 evidence of secondary slow or irreversible sorption of P has also been questioned in a long term  
425 monitored site, which implies that if this P attenuation mechanism is “missing” that the P in the  
426 groundwater could remain ultimately mobile (Robertson, 2008). Hence, any P that makes it through  
427 the subsoil into the groundwater may ultimately end up discharging into rivers and other surface  
428 water bodies. The Environmental Quality Standard (EQS) for phosphorus in rivers in Ireland is set at  
429 only 0.035 mg/l and although this study has shown relatively low potential P loadings beneath the  
430 on-site wastewater percolation areas, with the exception of Site 5 perhaps, it would not take much P  
431 in groundwater baseflow to cause the P in a river to exceed such a limit. The average P  
432 concentrations on Sites 1 to 6 at the 1.0 m depth plane were 0.8, 1.0, 0.1, 1.0, 6.9 and 0.6 mg/l  
433 respectively and so, depending the dilution of the effluent by groundwater (a function of aquifer  
434 characteristics and recharge in the area) and density of on-site systems, such low potential loadings  
435 could prove significant with respect to phosphorus levels in surface water bodies. Equally, an  
436 interim classification of groundwater bodies in Ireland, undertaken in response to the  
437 implementation of the EU Water Framework Directive, suggests that more groundwater bodies will

438 fail to achieve “Good Status” on the grounds of phosphorus loadings than nitrogen loadings (EPA  
439 and River Basin Coordinating Authorities, 2008), in particular the vulnerable karst limestone  
440 aquifers in the west of the country.

441 Finally, it should be emphasised that these research results have been derived from carefully  
442 installed on-site systems, where great care has been taken to ensure an even distribution of effluent  
443 across each percolation area. Unfortunately, this does not appear to be the reality for most existing  
444 on-site wastewater treatment systems in use in Ireland and elsewhere today. Therefore, poorer  
445 performance of on-site systems can often be expected than for the systems reported here.

446

#### 447 **4. Conclusions** (these have been made more succinct)

- 448 • The potential nitrogen loading per person to the groundwater beneath percolation areas  
449 receiving on-site secondary treated wastewater effluent was approximately two to three times  
450 that from the equivalent septic tank percolation areas.
- 451 • The reduced biomat formation along the percolation trenches receiving secondary treated  
452 effluent resulted in more concentrated hydraulic loading of the effluent, with a lower organic  
453 content that has limited denitrification.
- 454 • Higher resultant nitrogen loadings beneath the percolation areas were found on the more  
455 highly permeable sites for both secondary treated and septic tank effluent.
- 456 • An upper limit of one house every third of a hectare might be appropriate with respect to the  
457 density of on-site systems in an area to meet the requirements of the EU Nitrates legislation.
- 458 • Phosphorus removal was linked to subsoil mineralogy and appeared to be independent of the  
459 hydraulic loading rate. However, the relatively low potential P loadings beneath the on-site  
460 wastewater percolation areas may still be significant with respect to groundwater baseflow  
461 discharging into rivers and other surface water bodies.

462

**463 Acknowledgements**

464 The results of this research form the basis of a report prepared as part of the Environmental Research  
465 Technological Development and Innovation Programme under the Productive Sector Operational  
466 Programme 2000-2006. The programme is financed by the Irish Government under the National  
467 Development Plan 2000-2006. It is administered on behalf of the Department of Environment,  
468 Heritage and Local Government by the Environmental Protection Agency which has the statutory  
469 function of co-ordinating and promoting environmental research.

470

**471 References** [Several refs which repeat the same point have been removed]

472 Arias, C.A., Del Bubba, M., and Brix, H. (2001). Phosphorus removal by sands for use as media in  
473 subsurface flow constructed reed beds. *Water Research* 35(5), 1159–1168.

474 Avery, A.A. (1999). Infantile methemoglobinemia: reexamining the role of drinking water nitrates.  
475 *Environmental Health Perspectives* 107(7), 583-586.

476 Bartley, P. (2003). Nitrate responses in groundwater under grassland dairy agriculture. Unpublished  
477 PhD Thesis. Department of Civil, Structural & Environmental Engineering, Trinity College  
478 Dublin.

479 Beal, C.D., Gardner, E.A. and Menzies, N.W. (2005). Process performance and pollution potential:  
480 a review of septic tank-soil absorption systems. *Australian Journal of Soil Research* 43, 781-  
481 802.

482 Beal, C.D., Rassam, D.W., Gardner, E.A., Kirchof, G. and Menzies, N.W. (2008). Influence of  
483 hydraulic loading and effluent flux on surface surcharging in soil absorption systems. *Journal of*  
484 *Hydrologic Engineering* 13(8), 681-692.

485 Bedessem, M.E., Edgar, T.V. and Roll, R. (2005). Nitrogen removal in laboratory model leachfields  
486 with organic rich layers. *Journal of Environmental Quality* 34, 936–942.

- 487 Bouma, J. (1975). Unsaturated flow during soil treatment of septic tank effluent. Journal of  
488 Environmental Engineering 101, 967-981.
- 489 Bouma, J. (1979). Subsurface applications of sewage effluent, in: Planning the Uses and Management  
490 of Land, ASA-CSSA-SSSA, Madison, Wisconsin, pp. 665-703.
- 491 British Standards Institution (1999). BS5930:1999 Code of Practice for Site Investigations. British  
492 Standards Institution, London.
- 493 Canter, L. and Knox, R. (1985). Septic tank system effects on groundwater quality, Lewis  
494 Publishers, Chelsea, MI.
- 495 CEN (2006). Small wastewater treatment systems for up to 50PT – Part 2: soil infiltration systems.  
496 Technical Report CEN/TR 12566-2. European Committee for Standardization. Brussels,  
497 Belgium.
- 498 Conroy, M.J., Hammond, R.F. and O’Shea, T., (1970). *Soils of County Kildare*. An Foras Talúntais,  
499 Dublin.
- 500 Elrick, D.E. and Reynolds, W.D. (1986). An analysis of the percolation test based on 3-dimensional  
501 saturated-unsaturated flow from a cylindrical test hole. Soil Science 142(5), 308-221.
- 502 EPA (2000). Wastewater Treatment Manuals: Treatment Systems for Single Houses.  
503 Environmental Protection Agency, Wexford, Ireland.
- 504 EPA (2005). Water quality in Ireland 2001–2003. Environmental Protection Agency, Wexford,  
505 Ireland.
- 506 EPA and River Basin Districts Coordinating Authorities (2008). Interim classification of Irish  
507 Groundwater Bodies for the purpose of the EU Water Framework Directive. Environmental  
508 Protection Agency and River Basin Districts Coordinating Authorities, Wexford, Ireland.
- 509 Erickson, A.J., Gulliver, J.S., and Weiss, P.T. (2007). Enhanced sand filtration for storm water  
510 phosphorus removal. Journal of Environmental Engineering 133(5), 485–497.

- 511 FAO (1998). Crop evapotranspiration. Guidelines for computing crop water requirements. FAO  
512 irrigation and drainage Paper, 56. Food and Agricultural Organisation of the United Nations.  
513 Rome, 1998.
- 514 Fewtrell, L. (2004). Drinking water nitrate, methemoglobinemia and global burden of disease: a  
515 discussion. *Environmental Health Perspectives* 112, 1371-1373.
- 516 Fitzsimons, V.P. and Misstear, B.D.R. (2006). Estimating groundwater recharge through tills: a  
517 sensitivity analysis of soil moisture budgets and till properties in Ireland. *Hydrogeology J* 14:  
518 548-561.
- 519 Goldstein, S.N. and Wenk, V.D. (1972). Home Sewage Treatment. *Water Well Journal*: Feb. 36-40.
- 520 Hillel, D. (1980). *Applications of soil physics*. Academic Press Inc., San Diego.
- 521 Jantrania A.R. and Gross M.A. (2006). *Advanced onsite wastewater treatment technologies*. CRC  
522 press, Taylor and Francis, Boca Raton, FL.
- 523 Jenssen, P.D. and Siegrist, R.L. (1990). Technology assessment of wastewater treatment by soil  
524 infiltration systems. *Water Science and Technology* 2(3/4), 83-92.
- 525 Knobeloch, L., Salna, B, Hogan, A., Postle, J. and Anderson, H. (2000). Blue babies and nitrate  
526 contaminated water. *Environmental Health Perspectives* 108(7), 675-678.
- 527 Kristiansen, R. (1981). Sand-filter trenches for purification of septic tank effluent: II, The Fate of  
528 nitrogen.. *Journal of Environmental Quality* 10(3), 358-361.
- 529 Lawrence, C.H. (1973). Septic tank performance. *Journal of Environmental Health* 36(3), 226-228.
- 530 L'hirondel, J. and L'hirondel, J-L. (2002). *Nitrate and man: toxic, harmless, or beneficial?* CABI  
531 Publishing, Wallingford, Oxfordshire, UK.
- 532 McCray, J.E., Kirkland, S.L., Siegrist, R.L. and Thyne, G.D. (2005). Model parameters for simulating  
533 fate and transport of on-site wastewater nutrients. *Ground Water* 43(4), 628-639.
- 534 Metcalf and Eddy Inc. (Tchobanoglous, G., Burton, F.L. and Stensel, H.D.) 2003. *Wastewater*  
535 *Engineering: Treatment and Reuse*. 4th ed.. McGraw-Hill, London.

- 536 Misstear, B.D.R. and Daly, D. (2000). Groundwater protection in a Celtic region: the Irish example.  
537 In: Robins, N.S. and Misstear, B.D.R. (eds), Groundwater in the Celtic regions: Studies in Hard  
538 Rock and Quaternary Hydrogeology, Geological Society, London, Special Publications, 182,  
539 53–65.
- 540 Mulqueen, J. and Rodgers, M. (2001). Percolation testing for hydraulic conductivity of soils for  
541 percolation areas. *Water Research* 35, 3909-3915.
- 542 Parkin, T.B. (1987). Soil microsites as a source of soil denitrification variability. *Soil Science*  
543 *Society of America Journal* 51, 1194-1199.
- 544 Pell, M. and Nyberg, F. (1989a). Infiltration of wastewater in a newly started pilot sand-filter  
545 system:I. Reduction of organic matter and phosphorus. *Journal of Environmental Quality* 18,  
546 451-457.
- 547 Pell, M. and Nyberg, F. (1989b). Infiltration of wastewater in a newly started pilot sand-filter  
548 system: III. Transformation of nitrogen. *Journal of Environmental Quality* 18, 463-467.
- 549 Robertson, W.D., Schiff, S.L. and Ptacek, C.J. (1998). Review of phosphate mobility and persistence  
550 in 10 septic tank plumes. *Groundwater* 36(6), 1000-1010.
- 551 Robertson, W.D., Blowes, D.W., Ptacek, C.J. and Cherry, J.A. (2000). Long-term performance of in  
552 situ reactive barriers for nitrate remediation. *Ground Water* 38, 689-695.
- 553 Robertson, W.D. (2003). Enhanced attenuation of septic system phosphate in non-calcareous  
554 sediments. *Groundwater* 41, 48-56.
- 555 Robertson, W.D. (2008). Irreversible phosphorus sorption in septic tank plumes? *Groundwater* 46(1),  
556 51-60.
- 557 Schindler, D.W. (1977). Evolution of phosphorus limitation in lakes: natural mechanisms  
558 compensate for deficiencies of nitrogen and carbon in eutrophied lakes. *Science* 195(4275), 260-  
559 262.



- 560 Siegrist, R. and Boyle, W.C. (1987). Wastewater-induced soil clogging development. *Journal of*  
561 *Environmental Engineering* 113, 550-566.
- 562 Tucholke, M.B., McCray, J.E., Thyne, G.D. and Waskom, R.M. (2007). Correlating denitrification  
563 rates to soil texture using hierarchical cluster analysis. In: *Proc. of 11<sup>th</sup> National Symposium on*  
564 *Individual and Small Community Sewage Systems (ASABE)*. Warwick, Rhode Island.
- 565 Van Cuyk, S., Siegrist, R., Logan, A., Masson, S., Fischer, E. and Figueroa, L. (2001). Hydraulic  
566 and purification behaviours and their interactions during wastewater treatment in soil infiltration  
567 systems. *Water Research* 35(4), 953-964.
- 568 Viraraghavan, T., (1976). Septic tank efficiency. *ASCE Journal of Environmental Engineering*  
569 *Division 102(EE2)*, 505-508.
- 570 Ward, M.H., deKok, T.M., Levallois, P., Brender, J., Gulis, G., Nolan, B.T. and VanDerslice, J.  
571 (2005). Workgroup report: drinking-water nitrate and health - recent findings and research needs.  
572 *Environmental Health Perspectives* 113(11), 1607-1614.
- 573 WHO (2006). *Guidelines for drinking water quality – 3<sup>rd</sup> edition*. WHO press, World Health  
574 Organisation, Geneva, Switzerland.
- 575 Wilhelm, S.R., Schiff, S.L. and Robertson, W.D. (1994). Chemical fate and transport in a domestic  
576 septic tank system: unsaturated and saturated zone geochemistry. *Environmental Toxicology and*  
577 *Chemistry* 13(2), 193-203.
- 578 Zanini, L., Robertson, W.D., Ptacek, C.J., Schiff, S.L., and Mayer, T. (1998). Phosphorous  
579 characterization in sediments impacted by septic tank effluents at four sites in central Canada.  
580 *Journal of Contaminant Hydrology* 33, 405-429.

**Table 1. Summary of site characteristics**

	<b>Site 1</b>	<b>Site 2</b>	<b>Site 3</b>	<b>Site 4</b>	<b>Site 5</b>	<b>Site 6</b>
Effluent type	STE	STE	STE	SE	SE	SE
No. residents	6	4	4	3	5	4
T-value	3.7	15	33	4.5	29	52
Subsoil classification <sup>†</sup>	gravely SILT	sandy CLAY	gravely, clayey SAND	sandy GRAVEL	sandy CLAY to SILT	gravely, clayey SAND
Field sat. hyd. cond. - $k_{fs}$ , m/d <sup>#</sup>	1.05	0.28	0.13	0.84	0.15	0.08
LTAR, L/m <sup>2</sup> d <sup>§</sup>	40	20	10	40	15	10

<sup>†</sup> see BS5930 (British Standards Institution, 1999)

<sup>‡</sup> Normalised permeability coefficient - see CEN, 2006

<sup>#</sup> Field saturated hydraulic conductivity - see Rodgers and Mulqueen, 2006

<sup>§</sup> Long Term Acceptance Rate - see CEN, 2006

**Table 2.** Site characteristics and average total nitrogen loads across research periods

	Site 1	Site 2	Site 3	Site 4	Site 5	Site 6
Mean flow per capita (L/d)	119	105	82	90	60	123
Biomat length along trenches (m)	11	20	8	0.4	3	4
COD loading per trench (g/d)	72.0	40.2	108.4	12.8	14.1	24.5
Effective hyd. load <sup>†</sup> (L/m <sup>2</sup> .d)	24.0	11.7	22.8	373.3	41.7	54.7
Influent total-N to subsoil (g/d)	60.4	28.9	19.6	20.2	18.4	17.8
Total-N after 1m depth of subsoil (g/d)	25.0	6.8	2.1	15.2	16.7	13.6
Total-N per capita after 1m depth of subsoil (g/d)	<b>4.17</b>	<b>1.70</b>	<b>0.53</b>	<b>5.07</b>	<b>3.34</b>	<b>3.40</b>

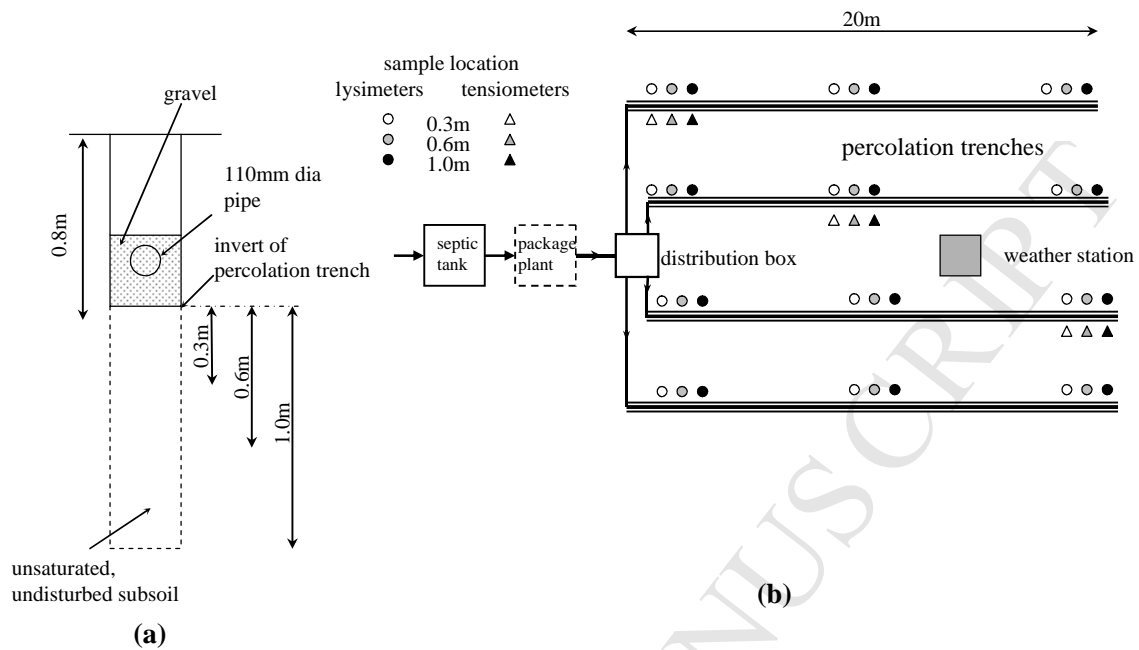
<sup>†</sup>per unit area of trench

**Table 3** The average breakdown of Total Inorganic-N in STE (Site 1) and SE (Site 4) across the three depth planes.

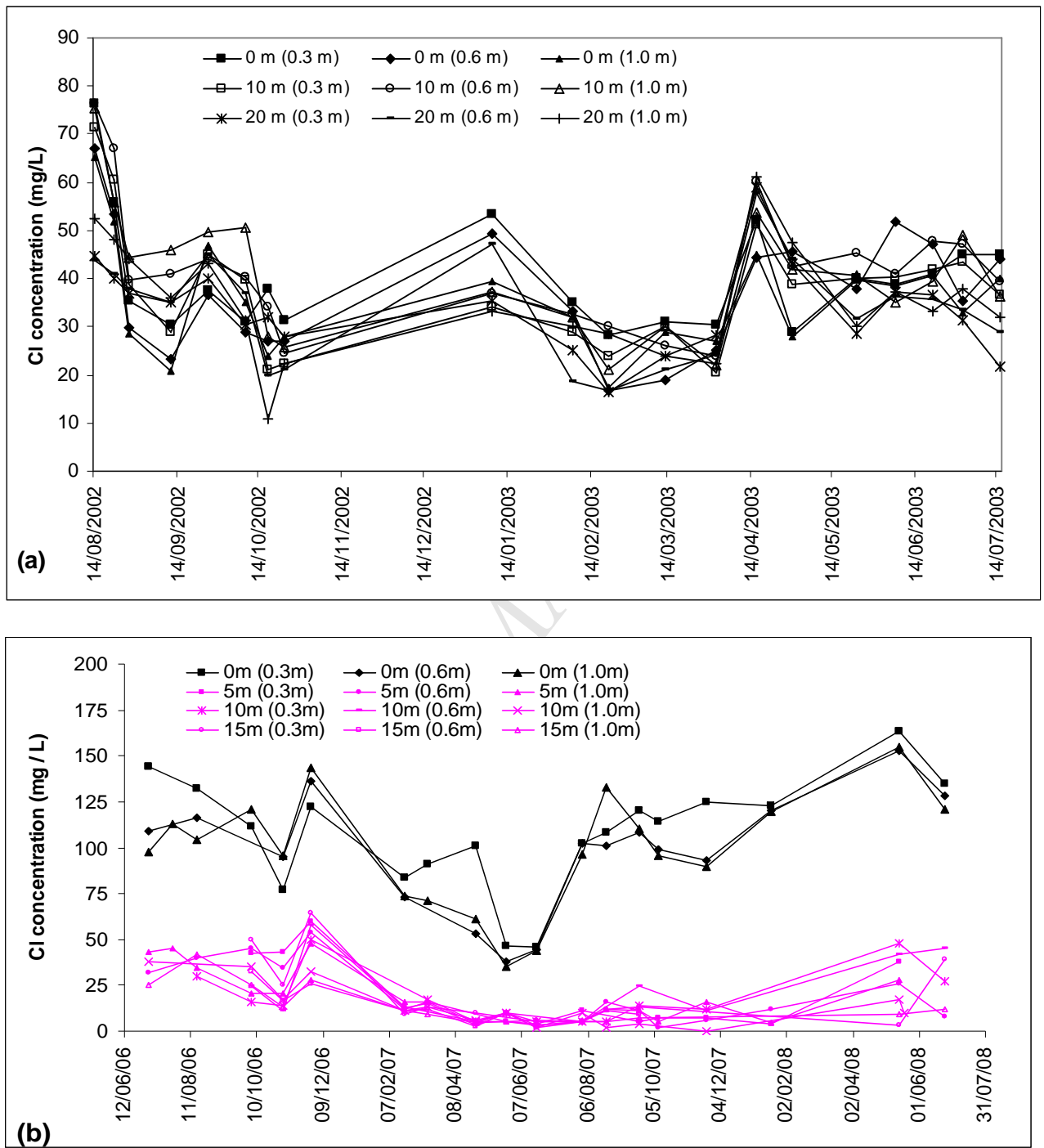
	% of Total Inorganic-N					
	NH <sub>4</sub> -N		NO <sub>2</sub> -N		NO <sub>3</sub> -N	
	<i>Site 1</i>	<i>Site 4</i>	<i>Site 1</i>	<i>Site 4</i>	<i>Site 1</i>	<i>Site 4</i>
STE / SE	98.3	28.0	0.3	19.2	1.4	52.8
0.3 m subsoil	27.2	1.3	4.3	6.0	68.5	92.9
0.6 m subsoil	13.4	1.1	1.7	3.8	84.9	94.9
1.0 m subsoil	4.3	1.1	0.3	2.6	95.4	96.1

**Table 4.** Site characteristics and average ortho-phosphate loads across research periods

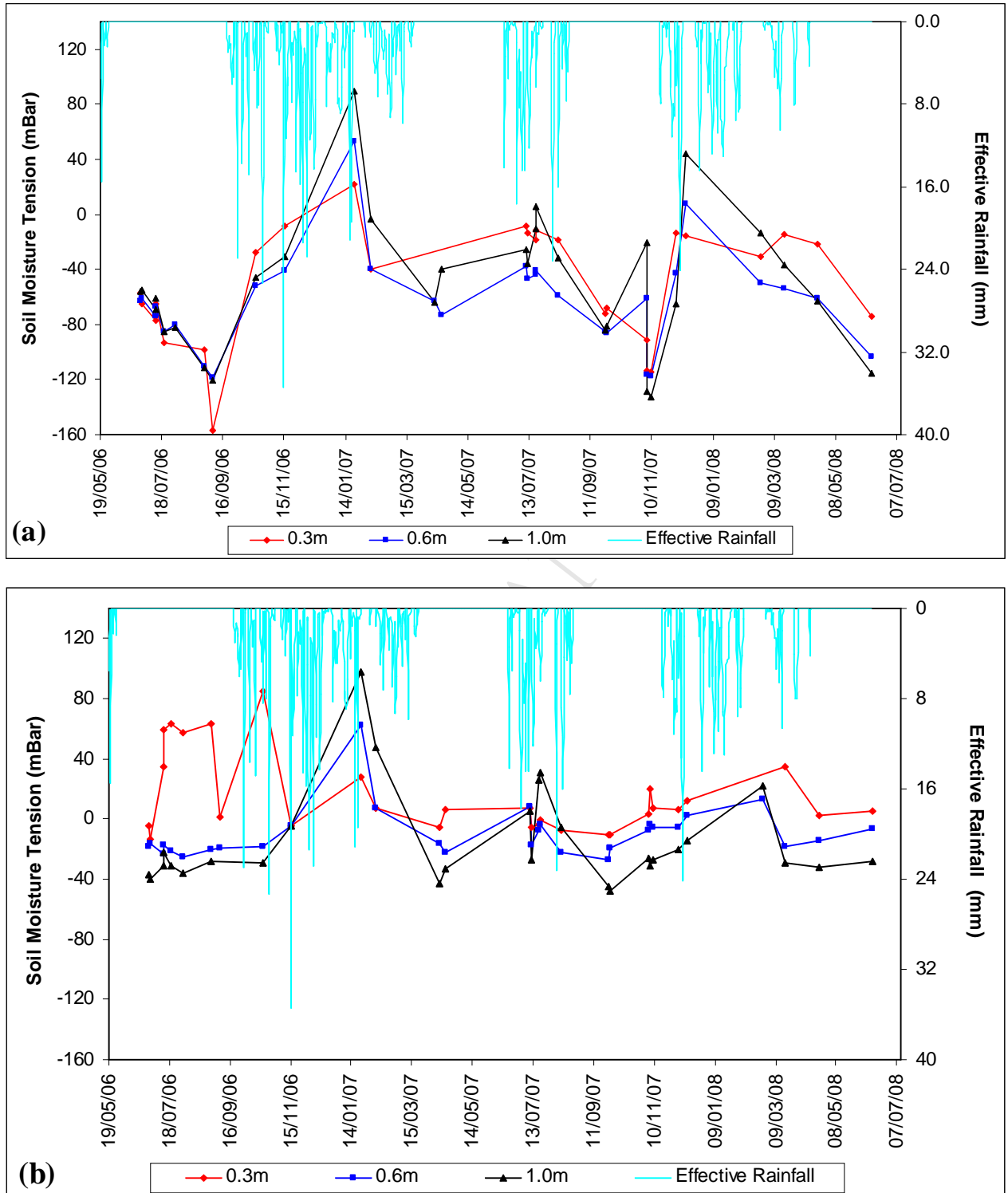
	Site 1	Site 2	Site 3	Site 4	Site 5	Site 6
Effluent	STE	STE	STE	SE	SE	SE
pH of influent	7.4	7.7	7.7	7.2	6.4	6.4
pH at after 1 m depth	8.0	8.0	7.1	7.6	8.2	6.6
Influent ortho-P (g/d)	13.2	5.9	1.2	7.0	9.5	2.0
Ortho-P at 0.3m depth (g/d)	1.2	1.2	0.1	0.8	6.9	1.7
Ortho-P at 0.6m depth (g/d)	0.8	0.7	0.0	0.2	5.8	1.3
Ortho-P at 1m depth (g/d)	0.6	0.6	0.0	0.2	2.2	0.2
Ortho-P at 1m depth per capita (g/d)	<b>0.10</b>	<b>0.15</b>	<b>0.00</b>	<b>0.07</b>	<b>0.44</b>	<b>0.05</b>



**Fig. 1.** Instrumentation layout: (a) Cross-section of trench and (b) Plan view of trenches.

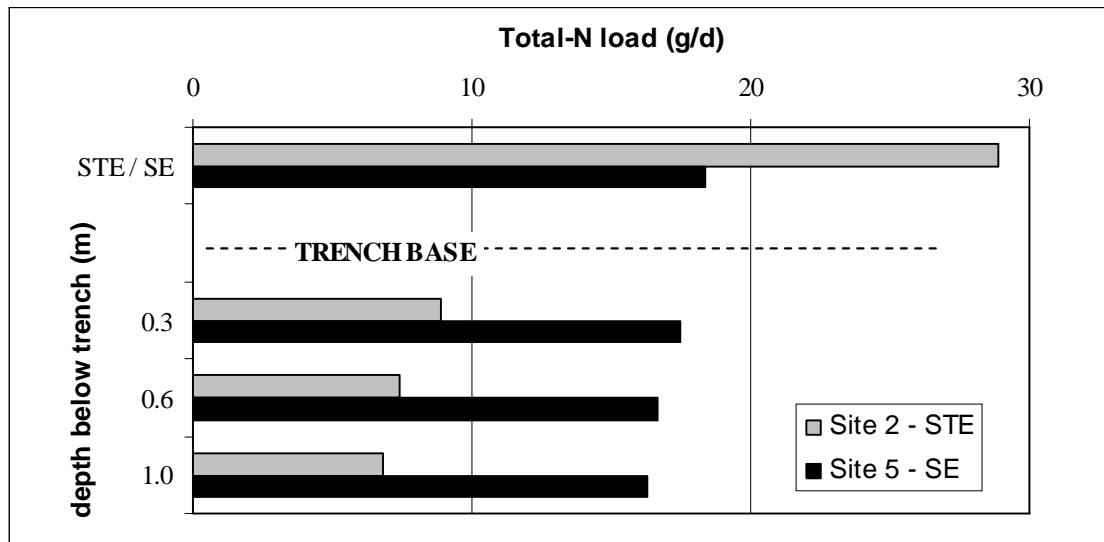


**Fig. 2.** Average Cl concentrations across all depth planes across the percolation area: **(a)** Site 2 and **(b)** Site 4.

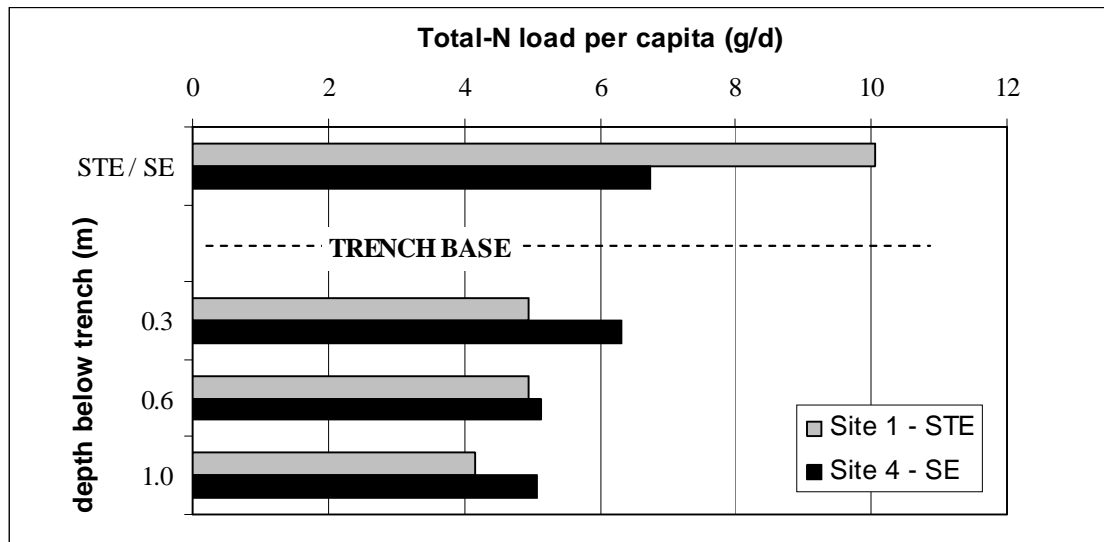


**Fig. 3** Soil moisture tension plotted against effective rainfall on the percolation trenches receiving STE (Site 1) for: **(a)** the 17.5 m sample position and **(b)** the 2.5 m sample position.

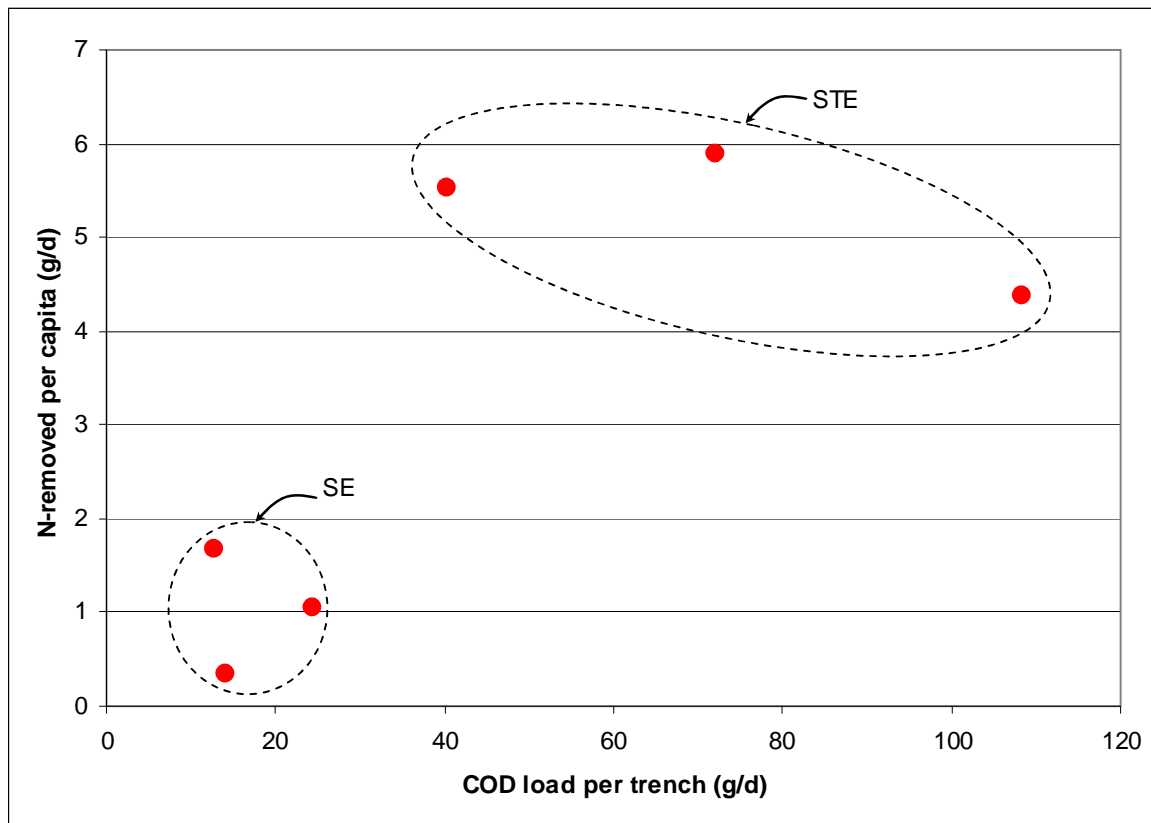




**Fig. 4.** Total N-loading with depth (Site 2 compared to Site 5).



**Fig. 5.** Total N-loading per capita with depth through high permeability subsoil (Site 1 compared to Site 4).



**Fig. 6** Correlation between total-N removed per capita and influent COD loads per trench.

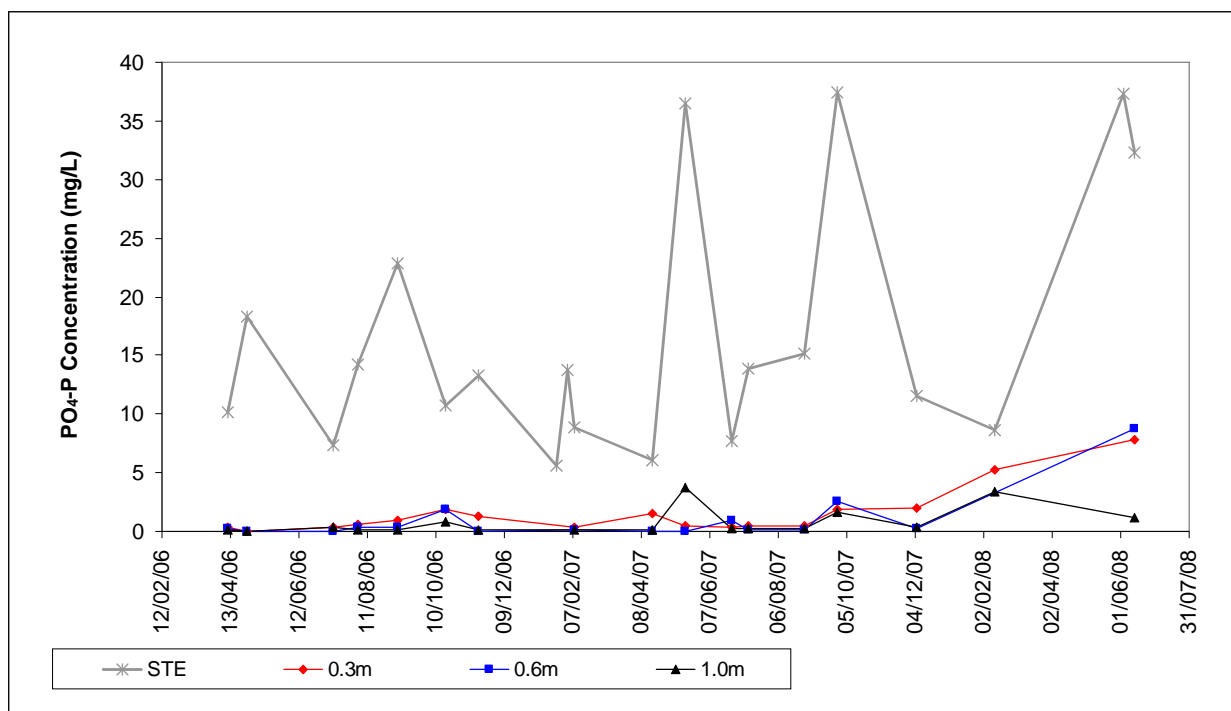


Fig. 7 Ortho-phosphate concentrations over time at Site 1.